



# EAST LIBERTY PRESBYTERIAN CHURCH

116 S. Highland Ave., Pittsburgh, PA 15206 412/441-3800 [www.ELPC.church](http://www.ELPC.church)

*As a diverse community of believers, we strive to follow God – the Creator who calls us, Jesus who teaches us, and the Spirit who empowers us. We show God’s unconditional love by providing a refuge for spiritual growth, ardently pursuing justice, and extending Christ’s radical hospitality to all. (Strategic Vision mission statement, 2011)*

## AUGUST 28, 2016 — 10 AM SUMMER WORSHIP FIFTEENTH SUNDAY AFTER PENTECOST

### TIME OF PREPARATION

“There is no water in oxygen, no water in hydrogen: it comes bubbling fresh from the imagination of the living God, rushing from under the great white throne of the glacier. The very thought of it makes one gasp with an elemental joy no metaphysician can analyze. The water itself, that dances, and sings, and slakes the wonderful thirst—symbol and picture of that draught for which the woman of Samaria made her prayer to Jesus—this lovely thing itself, whose very wetness is a delight to every inch of the human body in its embrace—this live thing which, if I might, I would have running through my room, yea, babbling along my table—this water is its own self its own truth, and is therein a truth of God.” — *George MacDonald*

“If gold has been prized because it is the most inert element, changeless and incorruptible, water is prized for the opposite reason — its fluidity, mobility, changeability that make it a necessity and a metaphor for life itself. To value gold over water is to value economy over ecology, that which can be locked up over that which connects all things.” — *Rebecca Solnit, “Storming the Gates of Paradise: Landscapes of Politics”*

### GATHERING MUSIC

“Lord, You Are Living Water” (*songbook #1*)

“Rain Down”

Capo 3: (D) (F#7) (Bm) (D7) (G)

F A7 Dm F7 Bb

Rain down; rain down; rain down your

(D/F#) (Em7) (A7) (D) (F#7) (Bm)

F/A Gm7 C7 F A7 Dm

love on your peo - ple. Rain down; rain

(D7) (G) (Em) (A7) (G) (D)

F7 Bb Gm C7 Bb F

down; rain down your love, God of life.

“Baptized in Water” (*songbook #2*)

\* Indicates where you may please rise in body or spirit.

---

August 28 • 15th Sunday after Pentecost

---

\* Indicates where you may rise in body or spirit.

**WELCOME & CHURCH NEWS**

The Rev. Dr. Randall K. Bush

**\* SHARING GOD'S PEACE**

The Rev. Dr. Bush

Leader: La paz de Cristo esté con ustedes.

The peace of Christ be with you.

People: Y también contigo.

And also with you.

**CALL TO WORSHIP** (*Psalm 63:1-4*)

Lenore Williams

Leader: O God, you are my God. I seek you, my soul thirsts for you; my flesh faints for you, as in a dry and weary land where there is no water.

People: **So I have looked upon you in the sanctuary, beholding your power and glory.**

Leader: Because your steadfast love is better than life, my lips will praise you.

People: **So I will bless you as long as I live; I will lift up my hands and call on your name.**

Leader: Let us worship God!

**\* HYMN**

“Lord, the Light of Your Love Is Shining” (*songbook #3*)

**CALL TO CONFESSION**

The Rev. Mary Lynn Callahan

**PRAYER OF CONFESSION**

The Rev. Callahan

**ASSURANCE OF GOD'S FORGIVENESS**

The Rev. Callahan

Leader: Jesus offered us living waters that, in all who sipped, it might gush up into eternal life. Friends, in the waters of baptism we are cleansed and refreshed in an ever flowing river of forgiveness.

People: **En Jesucristo tenemos perdón!**  
**¡Alaben a Dios!**

**In Jesus Christ, we are forgiven!**  
**Praise God!**

**SUNG RESPONSE HYMN**

“I've Got Peace Like a River” (*songbook #4*)

**SCRIPTURE LESSON**

Jeremiah 2:4-13

Lenore Williams

**MOMENTS WITH OUR CHILDREN**

The Rev. Dr. Bush

*There is an Extended Session class available in the summer for children who have completed Kindergarten and younger in the Nursery Suite on the first floor near the Highland Ave entrance.*

**\* HYMN**

“Ho, All Who Thirst” (*songbook #5*)

**SCRIPTURE LESSON**

John 7:37-39; Revelation 21:1-7, 22:17

The Rev. Callahan

**SERMON**

“Riffing on Water”

The Rev. Callahan

**PRAYERS OF INTERCESSION & THE LORD'S PRAYER**

The Rev. Dr. Bush

**OFFERING INVITATION**

The Rev. Dr. Bush

*We offer our gifts in response to God's love, and the grace of Jesus Christ, which we seek to make known through the ministries of this congregation.*

**OFFERTORY ANTHEM**

“Set Me As a Seal”

René Clausen

*Set me as a seal upon your heart, as a seal upon your arm.*

*For love is as strong as death.*

*Many waters cannot quench love, neither can the floods drown it.*

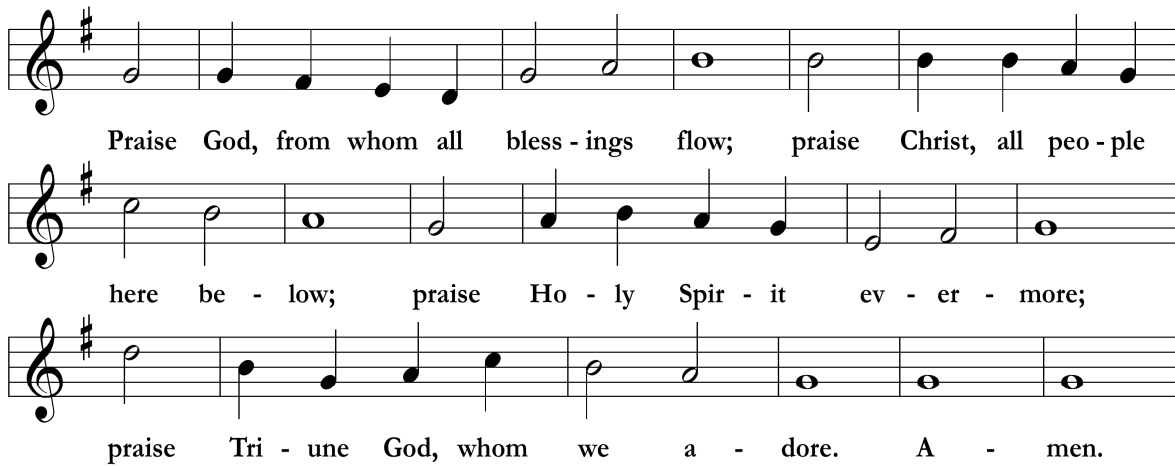
*Set me as a seal upon your heart, as a seal upon your arm;*

*For love is as strong as death. (from Song of Solomon 8:6-7)*

\* *Indicates where you may rise in body or spirit.*

\* DOXOLOGY AT THE PRESENTATION

OLD HUNDREDTH



\* PRAYER OF THANKSGIVING & DEDICATION

Leader: El Señor esté con ustedes.

**People: Y también contigo.**

Leader: Levantemos nuestros corazones.

**People: Lo tenemos levantado al Señor.**

Leader: Demos gracias al Señor nuestro Dios.

**People: Es justo dar gracias y alabanzas a Dios.**

Leader: Gracious Lord, often we have come to the well of your love, and there has always been living water to quench our thirst. We thank you for the living waters that we have received and are privileged to share; but, we are aware that the world is full of those who are thirsty. And so we pray that our gifts and offerings might provide wells and water carriers and cisterns and assurance of your love both here and beyond our reach.

**People: Amén.**

The Rev. Dr. Bush and The Rev. Callahan  
The Lord be with you.

**And also with you.**

Lift up your hearts.

**We lift them up to the Lord.**

Let us give thanks to the Lord our God.

**It is right to give God thanks and praise.**

**Amen.**

\* CLOSING HYMN

“Wash, O God, Your Sons and Daughters” (*songbook #6*)

\* CHARGE & BENEDICTION

The Rev. Callahan



*Please remember to turn off cell phones during worship. Hearing assistance devices and large print bulletins are available from the ushers.*

*Some prayers or liturgy were reprinted by permission of Westminster John Knox Press from Feasting on the Word Worship Companion, copyright 2012.*

♦ **PARTICIPANTS IN TODAY'S SERVICE**

Preaching: The Rev. Mary Lynn Callahan  
Liturgists: The Rev. Dr. Randall K. Bush  
Lenore Williams  
Musicians: Gabriel T. D'Abruzzo, *Music Associate*  
Chancel Choir  
Sound: Tim Benedict and Wayne Gaines

♦ **FELLOWSHIP TIME**

Following the service, please join us in the Narthex for our Fellowship Time. All are welcome!

*If you would like to make a food or monetary donation in support of our Fellowship Time, please call Pam Kimmel (412.441.3800 x18).*

♦ **WORSHIP FLOWERS**

The flowers today are in loving memory of Fannie E. Williams on her birthday, from the Williams, Fabilli and Motley families.

*If you would like to purchase flowers for our worship service in honor or memory of a loved one, please call Norma (412.441.3800 x11). The cost is \$50 a Sunday during the summer.*

♦ **WORSHIP NEXT SUNDAY**

*During the summer, we adjust our Sunday worship schedule to enjoy the glory of the season.*

8:45 am ..... **Journey Prayer.** A service that includes singing, reading of scripture and shared prayer in the style of the *Journey Worship* service. This time of prayer will be alternately led by Pastors Randy, Patrice and Mary Lynn. In Social Hall.  
*Sept 4* — The Rev. Dr. Randall K. Bush.

10 am ..... **Courtyard Summer Worship.** Our largest service, with music from the Chancel Choir and gathering music prior to the service.  
*Sept 4* — The Rev. Dr. Randall K. Bush preaching.

**Extended Session**

After the *Moments with the Children* during the 10 am Summer service, a children's ministry is offered with songs, Bible or mission stories, prayer, sharing and creative activities. A simple snack is served.

*There is only one Extended Session class available in the summer for children who have completed Kindergarten and younger in the Nursery Suite on the first floor near the Highland Ave entrance. It is available every Sunday.*

♦ **WEEKDAY WORSHIP**

**Labyrinth Prayer Walk**

A 35-foot floor mat with curved paths leading inward; an ancient tool for walking and seated meditation.

Mondays, 7 am to 1 pm

Wednesdays, 9 am to 9 pm

**Taizé Sung Prayer**

Chants and periods of meditative silence modeled after the Taizé community in France.

Wednesdays, 7 pm

**Prayer Room** (Room 135, in Highland Ave hallway)

Come to sit and pray in silence. Come to listen for the still, small voice of God. Come to experience the quiet in the midst of the wonderful busyness that is ELPC.

Open everyday

## WELCOME VISITORS!

We are grateful to have you join us for worship this morning and ask you to register your name in our Friendship Book.

*To learn more about our programs, church activities and volunteer services, we invite you to:*

Stay after today's service for our Fellowship Time in the Narthex. Identify yourself as a newcomer, and we will be happy to answer any questions you may have about ELPC.

Pick up a copy of our newsletter, the *Reaching Out*, either in the Narthex or at the Hospitality Desk near the Highland Avenue doors.

Attend a *New Members and Friends Class* on Sept 25 and Oct 2 to learn more about ELPC and Presbyterian theology. Lunch provided. Please contact Gloria Knopp to register or for more info (GloriaK@coh.net; 412.441.3800 x22).

Call the Church Office (412.441.3800), or visit the ELPC website at [www.ELPC.church](http://www.ELPC.church).



## TODAY AT ELPC

### Welcome to Worship at ELPC!

We are thankful you have chosen to worship God this summer with us. Please note that while the location of our 10 am worship service is in the courtyard, seating is also available in the 3rd floor Music Room, and on the 3rd floor balcony overlooking the courtyard; where the service is projected onto a large screen, and the patio seating is shaded. For the safety and comfort for all worshipping, those arriving after seating in the courtyard is full will be directed to the 3rd floor for additional seating, which can be easily accessed by any staircase from the 1st floor, or by taking the elevator. Thank you!

### Journey Prayer

A *Journey Prayer* time of sharing and gathering of the Journey worshipping community is held Sundays through Sept 4 at 8:45 am in the Social Hall. *Journey Prayer* includes singing, reading of scripture and shared prayer in the style of the Journey Worship service. This time of prayer will be alternately led by Pastors Randy, Patrice and Mary Lynn. **Everyone is welcome and encouraged to attend!**

### Soul Food

The final summer *Soul Food* class will be held following the worship service in the Pastor's Conference Room.

### Assisting in Worship Information Meeting

Anyone interested in learning more about assisting in worship is invited to a brief *informational meeting* in the Chapel **today immediately** after 10 am worship. Dozens of volunteers help each week to make sure our Sunday worship services are welcoming, accessible, and effective. Come learn how you can share your gifts in this way!

### Conversation on Gun Ownership and Gun Control

An initial *Conversation on Gun Ownership and Gun Control* will be held following worship in Room 234 for anyone interested in sharing their stories on this timely justice issue. Our hope is to offer a faithful and respectful dialogue that seeks to find points of commonality and consensus on a topic that is too often divisive for our community.

### Hand Fans

Keep cool while at worship this summer with the new hand fans available near each entrance to the worship area. Please leave them at the exit when worship is over.

### Today's Deacon-On-Duty

The *Summer* service DOD is **Liz Gonda**.



### PW Bible Study – Sept 6

Join us on Tuesday morning at 10 am for the first of our new 2016-2017 series *Who is Jesus*. We will meet for Bible study, fellowship and lunch. Bring your spiritual curiosity and a salad, bread or dessert to share. If you can't join us on Tuesday, you can join us Monday, Sept 12 at 7 pm for Bible study and fellowship.

### TRAIL Young Adult First Friday – Sept 2

*Come Share Neighborly Love!* Join us for this coffeehouse evening at 7 pm at Wallace Memorial PC, 1146 Greentree Road. Bring a poem, song, reading, Scripture, a story or anything creative to share with the group focused on loving your neighbor, as well as a dessert to share.

### LGBTQ Ministry Gathering – Sept 11

The next LGBTQ Ministry *spiritual gathering* will be held on Sunday, Sept 11 at Noon. *TransPride Pittsburgh* will be Sept 15-17. To attend either event, or to learn more, please contact Wil Forrest (Wil@coh.net; 412.441.3800 x14). All allies and LGBTQ folks are welcome!

### ELPC Steeple Tour – Sept 11

Enjoy a unique view of the East End of Pittsburgh from ELPC's steeple on Sunday, Sept 11. Join our tour guide in the library following the 11 am service. Allow 40 minutes for the tour. Please wear shoes and slacks that allow for the climbing of ladders.

## September Events

### SUNDAY, SEPTEMBER 11

**Journey Worship** Returns at 8:45 am in the **Social Hall**.

The Christian Education Committee welcomes you back to **Church School** at 9:45 am, as classes resume for all ages.

Before class, stop by Rooms 224 and 227 for a light breakfast. Greet old friends and make new ones. Breakfast will be served at 9:30 am.



**Sanctuary Worship** Returns at 11:00 am.

### SUNDAY, SEPTEMBER 18

Visitor's Sunday and the Church Life Sampler follows the 11:00 am Worship Service in the Social Hall.

### SUNDAY, SEPTEMBER 25

The Church Picnic follows the 11:00 am Worship Service with seating in the Social Hall and Courtyard.



*As a caring congregation of faith, we ask you to remember the following people in your prayers:*

Ruth Donalson, Mary Beth Gladis,  
Cathie Hajdu, Sandy Kalsey,  
Pam Kimmel's niece Jen, Mary Anne Kirby,  
Deborah Marx's friends Monica and Chris,  
Gail Noden, Jan Pressman's daughter Caryn, Judy Roberts,  
Jim and Carolyn Russ' daughter Laura and her family,  
and Matt Stufft's mother.

*Condolences to John Bavaro on his sister's passing.*

There are **Prayer Boxes**, with cards for prayer requests, available on the tables in the Narthex and East Transept entrances to the Sanctuary.

### Committee Meeting This Week

Justice..... Today, 11:30 am (Room 244)

### Hope Academy of Music and the Arts

Register now for Hope Academy classes! The 2016-2017 Course Brochure and registration forms are available on the information tables throughout the church.

### Sponsor Our Flowers for Worship

If you would like to purchase the flowers used in our worship service, please contact Norma (Norma@coh.net). A brief notation of your choosing will be included in the printed Sunday bulletin when you sponsor that week's flowers. The cost is \$100 per Sunday during our regular worship schedule (Rally Day to June), and \$50 per Sunday during our outside summer courtyard worship services. Sept 4 is the final available summer date.

IN OUR

## COMMUNITY



### Volunteer at Holy Family Institute

Holy Family Institute's East Liberty office (N Whitfield St) is in need of a clerical volunteer one day a week. If you are between jobs and looking to enhance your resume or are retired, this volunteer opportunity is for you! If interested, please contact Lynn Guerra (412.766.9020 x304; Guerra.lynn@hfi-pgh.org).

### Farmers' Market – Mondays

The East Liberty Farmers' Market is held every Monday from 3-7 pm in the parking lot between Station St & N Euclid Ave.

### Donations to EECM

East End Cooperative Ministry (EECM) is in need of these donations: toothpaste, foot powder, deodorant. Their August food-of-the-month is tuna. Please leave your donations in the basket near the Hospitality Desk.

**i SERVE**  
LOVE IN ACTION

### SERVICE OPPORTUNITIES

♦ Food 4 Thought Mentor or Meal Team Member ♦  
(apply by August 31—LAST CALL)

### Looking for a way to put your love in action?

Contact Wil (412.441.3800 x14). Visit the iSERVE webpage at [www.ELPC.church/programs/iserve-2](http://www.ELPC.church/programs/iserve-2) to learn about other service opportunities.

## ELPC's Prayer room



### New Members and Friends Classes

Sept 25 and Oct 2  
following 11 am worship

*Interested in becoming part of the ELPC church family?*

Contact Gloria Knopp (GloriaK@coh.net;  
412.441.3800 x22) to learn about  
ELPC and Presbyterian theology.