

EAST LIBERTY PRESBYTERIAN
CHURCH

NOMINATED OFFICERS

ANNUAL CONGREGATIONAL MEETING
FEBRUARY 27, 2022



EAST LIBERTY PRESBYTERIAN
CHURCH

BOARD OF DEACONS

CLASS OF 2025

Karen Beasley (2024)

JoEllen Aleshire

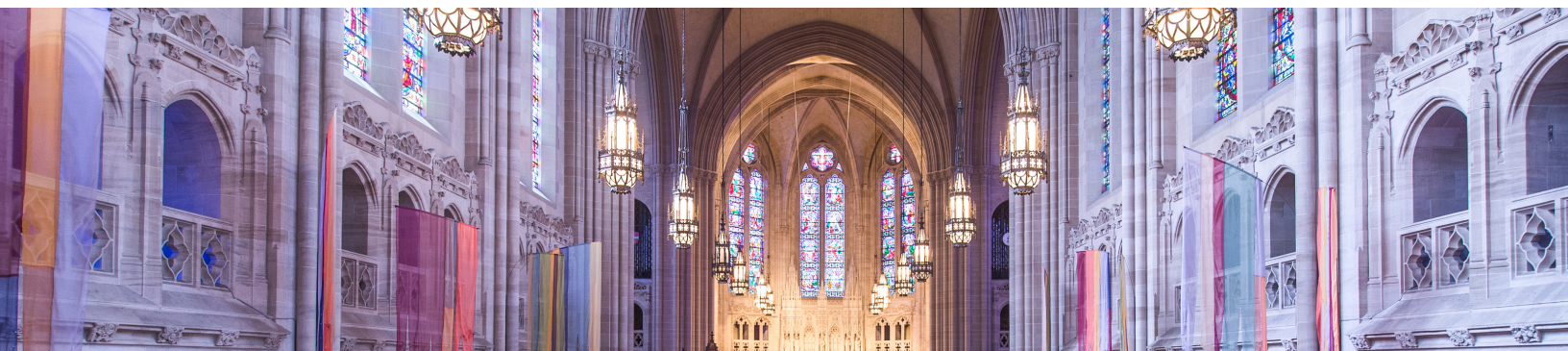
Yodit Betru

Dana Carl

Jeff Fritz

Jason Lucarelli

Annabel Degenholtz (2023/Youth Deacon)



Karen Beasley

Occupation

Public Safety/City of Pittsburgh-
Retired



Questions for Nominees

Q: In what ways have you been active in your church and in your community?

Deacon (3 years), community support in areas of environment protection, conservation, U.S. Military, animal rights, and being a caregiver to others.

Q: What is your vision for the future of ELPC?

I would like to see ELPC to continue with its mission of diversity acceptance of all sexual identities and women in pastoral positions. I don't want to see staff phased out and a dependence on volunteers. I believe a church as large as ELPC and a "Beacon" in an economically improving community needs a trained and efficient staff to meet the needs of a church that has its hands in many pots.

JoEllen Aleshire

Church has always been a central part of my life since I was in Cradle Roll. I have been a part of ELPC since 2015.

Studying and sharing history is my true passion. I hope that one can say I bring a servant leadership attitude to all I do.



Questions for Nominees

Q: In what ways have you been active in your church and in your community?

Former member of Nominating Committee (Chair one year).
Currently: Serve as a Beadle, Church Tour Guide, Usher.

Occupation

Retired: College History Instructor; Since 2003
Docent/Teacher at The Frick Pittsburgh

Q: What is your vision for the future of ELPC?

The exquisite beauty of our Gothic architecture, beautiful music and thoughtful, inspiring preaching form the stepping off point of our church's ministry within and without. My vision is that we continue to be a church that never stops gaining new knowledge; that we learn how to be truly Christian in an often chaotic world; that we will be a church that grows and adapts to what is needed around us; that we continue to be an inclusive church and a church that directly cares for all people.

Yodit Betru

Occupation

Professor, Social Work

As a family we are deeply committed to issues of justice and equity and pursue that in our professional and personal lives. I have been a member of ELPC for several years and Paul and I got married here. I want to serve the church and community and expose our daughter to church and the faith community.



Questions for Nominees

Q: In what ways have you been active in your church and in your community?

Served on nominating committee. I have served on the board of directors for Pittsburgh Action Against Rape for six years in various capacity including VP. Currently serve on the board of directors for SoJourney House for my 6th year.

Q: What is your vision for the future of ELPC?

I am proud of the community work ELPC does. I would like to see it continue to grow in having members of East Liberty community attend the church and grow in having more racially diverse congregation.

Dana Carl

I am a transportation security officer at Pittsburgh International Airport. I enjoy, when, I can, participating in the church's media ministry. I am always interested in health and fitness. I have been a runner since the age of 14. I am also interested in care/lending time with elders.

Questions for Nominees

Q: In what ways have you been active in your church and in your community?

Media and Open Hand Ministry (briefly)

Occupation

TSO with Transportation – at Pittsburgh International Airport



Q: What is your vision for the future of ELPC?

My vision for the future of ELPC is to continue its' growing forward progress in and outside the walls of the church.

I am truly humbled by this nomination and pray that the Lord continues to order my steps.

*Jeff
Fritz*



Jason Lucarelli

I am a social person in every sense of the word. I thrive on connection and community and want to expand on the community I have found within ELPC over this past year. I believe social work and ministry dovetail perfectly and I strive to bring my skills and knowledge to the ELPC family to spread the Gospels and bring change to this world.



Questions for Nominees

Q: In what ways have you been active in your church and in your community?

Within ELPC, for the past year I have engaged in service with both the Justice Committee and Youth Programming. I am also enrolled at the dual Masters of Divinity program at PITT Theological Seminary and MSW program at PITT. Within PITT, I hold officer positions with the MSW Student Executive Committee and LGBTQ Graduate Student Organization M.O.G.I. As a caseworker in child protective services I have spearheaded numerous initiatives and projects to address social injustice in a myriad of ways, including representing Allegheny County OCYF within Allegheny County DHS' LGBTQIA Champion Committee. I am also an Albert Schweitzer Fellow For Life.

Occupation Child Protective Services Social Worker

Q: What is your vision for the future of ELPC?

I want ELPC to remain a vibrant and flourishing community; and for everyone to feel a sense of belonging and community despite our differences. Further, I want ELPC to be at the forefront of advancements and that convey that all world views have a place within our home we call the house of God.

Thank you to so many people at ELPC whom have opened me with welcome arms. Especially Pastor Heather Schoenewolf. Her ministry is proof that sometimes the Gospel find you instead of the other way around.

Annabel Degenholtz

I have a lot of ideas for community centered things ELPC can do and I'd love the church family to make them come to reality.



Questions for Nominees

Q: In what ways have you been active in your church and in your community?

I frequently help with fellowship hour. In 2019 I was a representative for the partnership between Malawi and the Pittsburgh Presbytery. At my school I started the garden club, which has done gardening projects in green spaces in and around the school.

Occupation

Student

Q: What is your vision for the future of ELPC?

I think ELPC can reignite it's past programs to once again become a community hub for people from all over the city.

EAST LIBERTY PRESBYTERIAN
CHURCH

SESSION

CLASS OF 2025

Pamela Kimmel (2024)

Ray Anthony

Hollen Barmer

Sandra Brake

Carol Chonoska

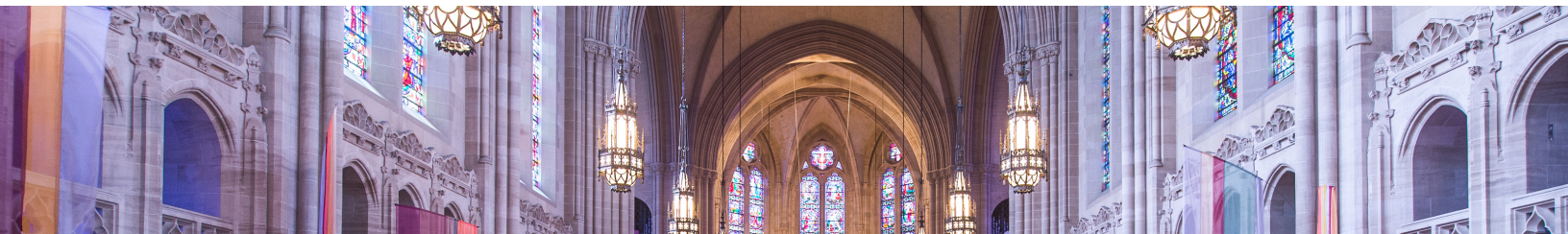
Carla Depperman

Becky Gloninger

Stephen Simpson-Hunt

Matt Stufft

Charlotte Brake-Hoffman (2023/Youth Elder)



Pamela Kimmel

I feel that with my knowledge of ELPC and the church's people and programs, I may be able to help sustain and advance the important work and the mission.



Questions for Nominees

Q: In what ways have you been active in your church and in your community?

I was employed by ELPC for 20 years and remain active in the Chancel Choir and assisted with the Matthew 25 initiative. I currently volunteer, usually several times a week, at Greater Pittsburgh Community Food Bank and I am a singer in and on the Board of Belle Voci, a community women's choir.

Occupation

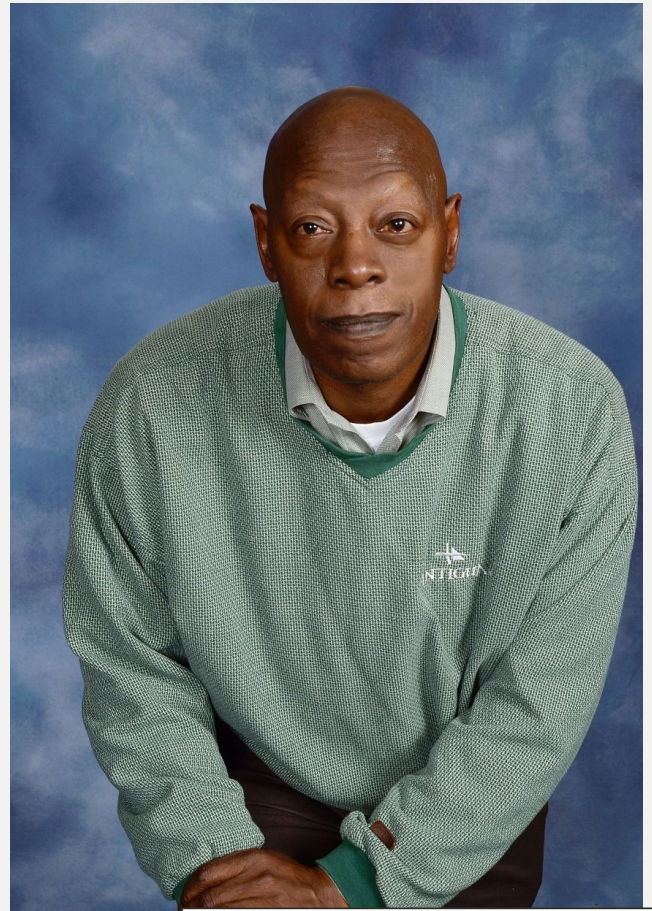
Retired Non-profit Administrator and Director

Q: What is your vision for the future of ELPC?

My vision is for the church to expand and deepen its commitment to show, through action, not merely words, God's unconditional love in our love and response...unconditionally, as our Mission Statement and Christ call.

Ray Anthony

I am a peace maker.



Questions for Nominees

Q: In what ways have you been active in your church and in your community?

ELPC – I served two terms as a Deacon. I was on the “Good Samaritan” Staff. I am on the “Facing Systemic Racism” staff. Have given the “Scripture of the Day: many times before the congregation. I am an active participant in “Soul Food” Sunday Church School. I am a member of the A.R.T.T. (Anti-Racism Transformation Team of the Pittsburgh Presbytery.

Community: Bring N.A. Meetings to Allegheny County Jail monthly.

Occupation

Retired

Q: What is your vision for the future of ELPC?

ELPC will be an anchor from which many ministries will spring forth from and be held by.

ELPC is the Word in action.

Hollen Barmer

Two sources of inspiration for me are people and information. In my work life, I help scientists tell the stories of their technical research to the world, and as a volunteer, I choose projects rooted in building relationships, often connecting the dots using facts and statistics. I hope to serve ELPC as a prayerful and thoughtful decision maker, always attuned to both people and information.



Questions for Nominees

Q: In what ways have you been active in your church and in your community?

At ELPC, I currently serve on a task force advising session on the removal of the Stonewall Jackson panel from the Presbyterian history window in our sanctuary. In my community, I serve on the leadership team for Swissvale Community Action Committee. We are working to create a more equitable, resilient, and sustainable community through actions around food growing, government transparency, and local election information. I was a front-desk volunteer welcoming guests to Family House, an affordable inn for patients traveling to Pittsburgh for medical care, for 18 years.

Occupation

Strategic Communications Manager

Q: What is your vision for the future of ELPC?

I look forward to seeing ELPC adapt and grow as a Matthew 25 church.

I grew up in Memphis, TN, in a Southern Baptist faith tradition. I am full of gratitude to have found a faith community where I am invited to share my gifts, without qualification, to serve my church.

Sandra Brake

MS in Church Social Work, U of Ill and McCormick Seminary Experience in community organization, inner-city Social Work, Psychiatric and Medical Social work, 25 yrs. SW administration, Dept of Veteran Affairs. Mother and Grandmother.



Questions for Nominees

Q: In what ways have you been active in your church and in your community?

Past President and past Conservation Chair -Forest Hills Garden Club Block party planning Deacon N.Y. Ave Presby Church - Washington DC Elder Mt. Auburn Presby Church- Cincinnati Ohio.

I am grateful for the role this church has played in my life.

Occupation

Retired Social Worker

Q: What is your vision for the future of ELPC?

Continued emphasis is living our faith through individual and corporate action. Continued inclusive and sensitive emphasis on systemic and political sources of conflict and oppression with channels for change. Ministry to members and community in need. We rejoice in outstanding worship, music, preaching and teaching. Growth in children and youth programs.

Carol Chonoska



Carla Deppermman

Enthusiastic for realization of ELPC goals,
diligent and dependable, team player,
consensus-builder

Questions for Nominees

Q: In what ways have you been active in
your church and in your community?

Previously served 2 terms as elder
and clerk, officer nominating,
membership and outreach, mission
trips (3) to Guatemala for Sister
Parish, member of Seekers class.

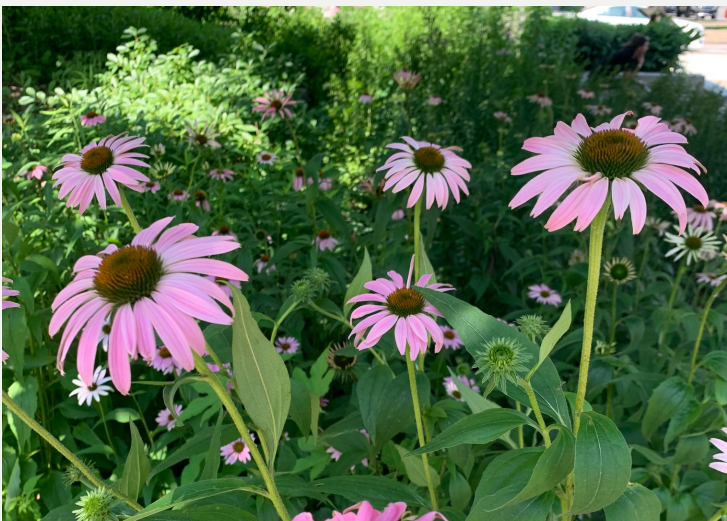


Occupation

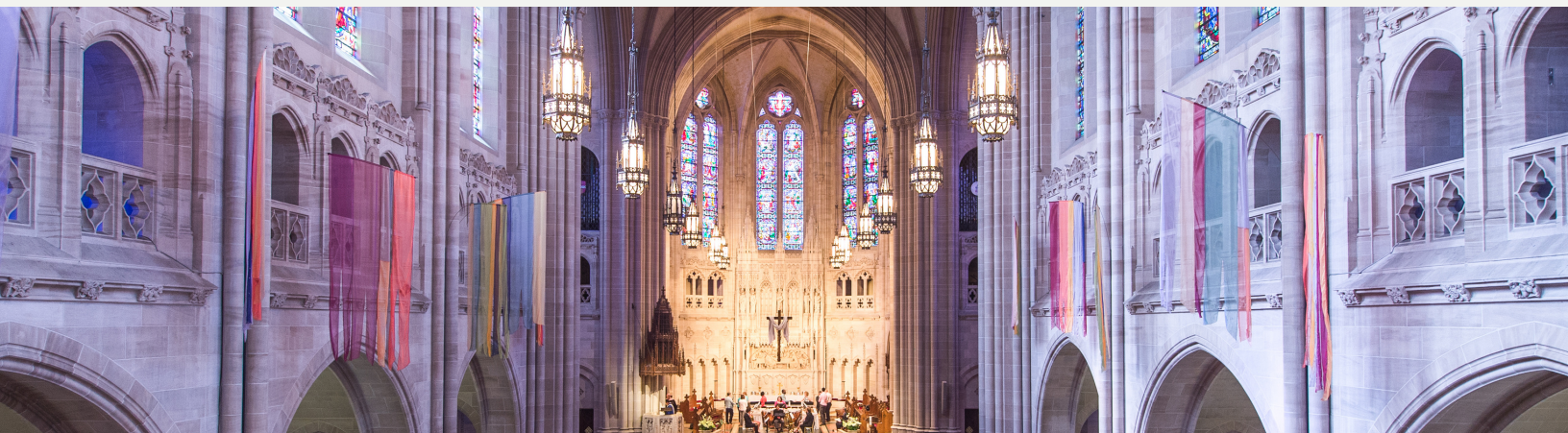
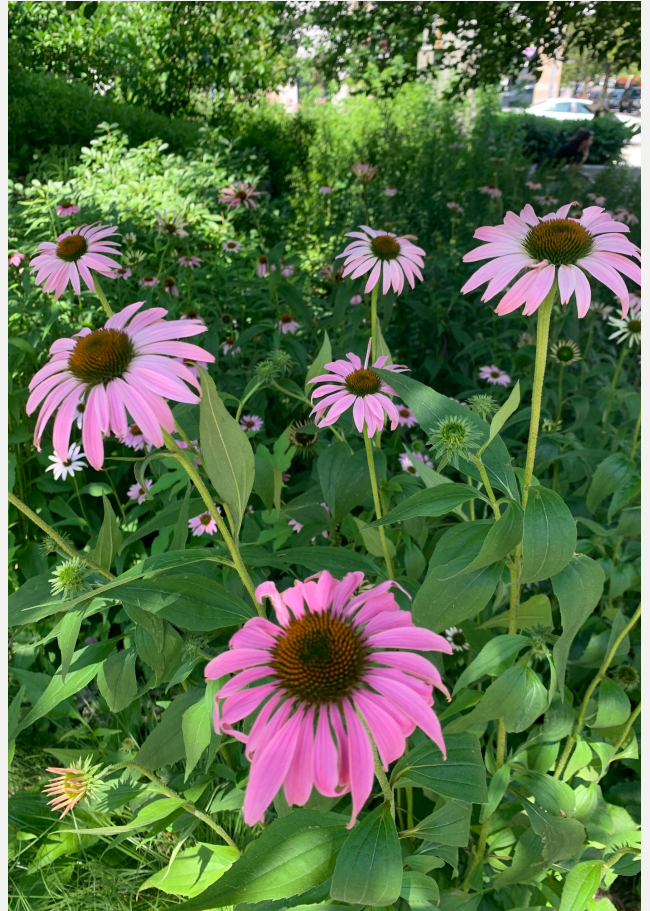
Retired teacher, training manager.
customer service

Q: What is your vision for the future of
ELPC?

Further realization of stated goals of our
church as a Matthew 25 congregation.



Becky Gloninger



Stephen Simpson-Hunt

I am the proud father of two amazing boys who I am raising with the loving support of my husband, Travis. Our family is also hosting an exchange student from Hungary this school year and he brings a new and interesting dynamic to our home. We are a family on the move! Our interests include traveling, hiking, biking, kayaking, swimming, camping, museums, live theater/Broadway, spectator sports, and spending time with extended family. My profession involves oversight of clinical research studies for new pharmaceutical products. I have a passion for community service, youth programs, and life-long learning. I hope to bring these passions to life at ELPC.



Occupation

Pharmaceutical Quality
Assurance

Q: In what ways have you been active in your church and in your community?

At ELPC I have been involved with the LGBTQ+ Ministry, volunteered at the Chapel Market, served as an usher, attended the Seekers Adult Christian Education classes, and lead readings during church services. In my community, I am a current member and Director-elect of the Dormont-Mt Lebanon-Castle Shannon Rotary Club and a former member and Past President of the Wilkinsburg-Regent Square Rotary Club where I managed and actively participated in community service projects supporting local charities, including the Wilkinsburg Community Ministry and the South Hills Interfaith Movement (SHIM). I am an Assistant Den Leader for Cub Scout Pack 22 in Mt Lebanon and a "Homeroom Parent" for my son's 3rd Grade class at Washington Elementary School in the Mt Lebanon School District where I help coordinate holiday parties, classroom projects, and school field trips.

Q: What is your vision for the future of ELPC?

ELPC is my spiritual home because of it's devotion to radical hospitality. I envision ELPC growing into an even more dynamic and passionate congregation that continues to serve the surrounding community and that supports our global missions.

ELPC will always be a special place for me. It is where I got married and where my two sons were baptized surrounded by our family and friends.

Matt Stufft

I have been a member at ELPC since August of 2013, and I feel that I have been able to volunteer and serve the church in various ways. I enjoy worship and music and the various styles of worship while serving on the choir and on occasion as a liturgist.

Questions for Nominees

Q: In what ways have you been active in your church and in your community?

I previously served two terms on the Board of Deacons, including as co-moderator. I have been a part of the young adults ministries and with LGBTQ ministry. I am currently on the chancel choir. Prior to returning to in person worship, I assisted with the livestream team.



Occupation

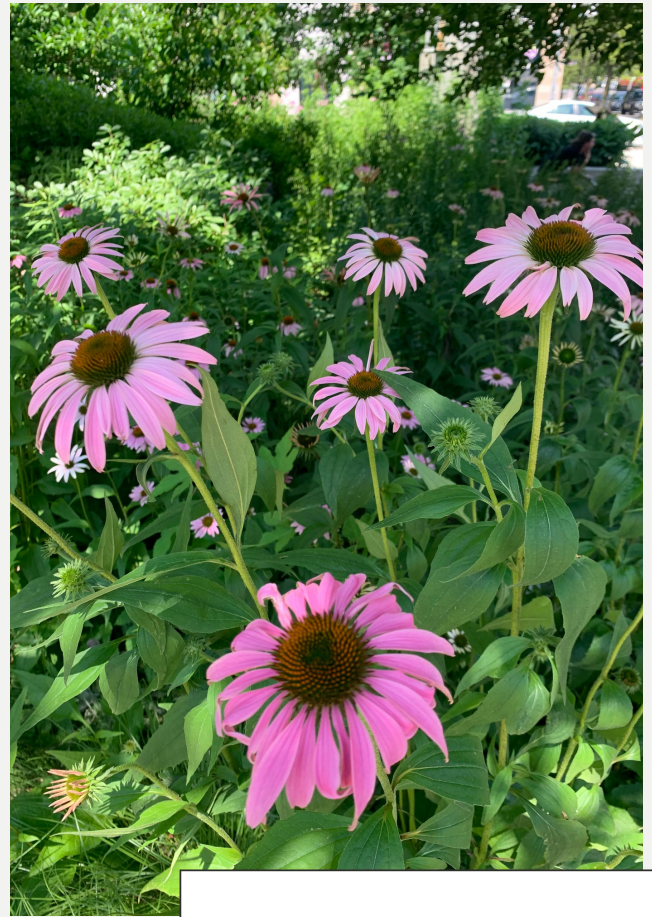
Quality Analyst

Q: What is your vision for the future of ELPC?

I believe ELPC will continue to grow as fully inclusive family. We will always seek new ways to interact with the community and world around us. We will continue to be a church that not shy away from social justice issues. We will continue to call out and correct injustices whether it be local, national, or global. We will continue to be a Matthew 25 church by providing for those in need on the margins, and continuing to welcoming all.

Charlotte Brake-Hoffman

I am a sophomore at Winchester Thurston high school. My family has gone to ELPC for 18 years. I am an extrovert who enjoys working and collaborating with others and I hope to apply these skills while working as a youth elder.



Occupation

High School Sophomore

Questions for Nominees

Q: In what ways have you been active in your church and in your community?

I have been a member of the church for my entire life (16 years) and I served as a youth representative on the board of deacons.

Q: What is your vision for the future of ELPC?

My goal is to help ELPC continue to work towards its promise of equity and inclusion.

EAST LIBERTY PRESBYTERIAN
CHURCH

CENTENNIAL FUND

CLASS OF 2025

Kathy Callahan



Kathy Callahan

Carol Bonner and I live in Squirrel Hill and are so grateful to have made ELPC our church home. Enjoying theatre and live music, visiting blue water, and watching college basketball are among my passions. I am happily retired, a curious person, and a lifelong learner. I describe myself as a “Jill of all trades and master of few”. I have always liked variety in my work, hobbies, and interests vs. spending a lot of time on a single thing. Related to the role on the Centennial Fund, a long-time hobby/interest is financial management, especially exploring how to fund goals, mission, and vision.



Q: In what ways have you been active in your church and in your community?

I was raised in the Presbyterian church (PC USA) in Baltimore and have been a member of several congregations around the country before I moved to Pittsburgh, serving in many ways. Carol and I joined ELPC in 2005 before we married. I have helped prepare Journey worship services, served on the most recent capital campaign committee, and volunteered for lots of one-time gigs. I have participated in the LGBTQ ministry since it's founding. My most recent community volunteer efforts include “grate keeping” with Allegheny CleanWays and conference and strategic planning with the local chapter of the International Dyslexia Association. I am a member of 100 Women Who Care Pittsburgh and a proud supporter of the Bartko Foundation and 3 other local organizations which help women succeed.

Occupation Retired, Chemical Business Leader,
Management Consultant

Q: What is your vision for the future of ELPC?

ELPC is a beacon of loving welcome to all people to live authentically and build connections in a community of believers and seekers. ELPC is known here and throughout the region for pursuing justice, supporting our neighbors, and extending radical hospitality.

EAST LIBERTY PRESBYTERIAN CHURCH

NOMINATING COMMITTEE

CLASS OF 2023

Damon Bethea
Michele Bossers
Andrea DeVries
Josh Mattila



Damon Bethea

I am married to Lora Bethea and we have two adult children and nine grandchildren. We have been active ELPC members for years. I work for United Way and I focus on issues impacting children and youth in our region. For a decade, I led our Be A Middle School Mentor (BAMSM) project that matched caring adult mentors with middle school students in Allegheny County. While doing this work, I learned the importance of being a collaborative leader (bring all partners together for a common cause and leading the group to achieve our goals) and implementing this leadership style in many aspects of my life.



Questions for Nominees

Q: In what ways have you been active in your church and in your community?

I have served on Session; I am the chair of the Faith Formation, Board; I co-teach the middle school class for Church School; and I am a member of the Youth and Young Adult (YAYA) and Facial Systemic Racism Committees.

Occupation Community Impact Manager at United Way of Southwestern Pennsylvania

Q: What is your vision for the future of ELPC?

My future vision for ELPC includes living out our faith through diversity, equity, and inclusion and being the Cathedral of Hope during these challenging times.

Michele Bossers

Questions for Nominees

Q: In what ways have you been active in your church and in your community?

Ruling elder, past member of Centennial Fund and Chancel choir, current member of Justice Committee, co-chair of Facing systemic Racism Committee, member of Mission Board. Presbyterian Women participant.



Retired

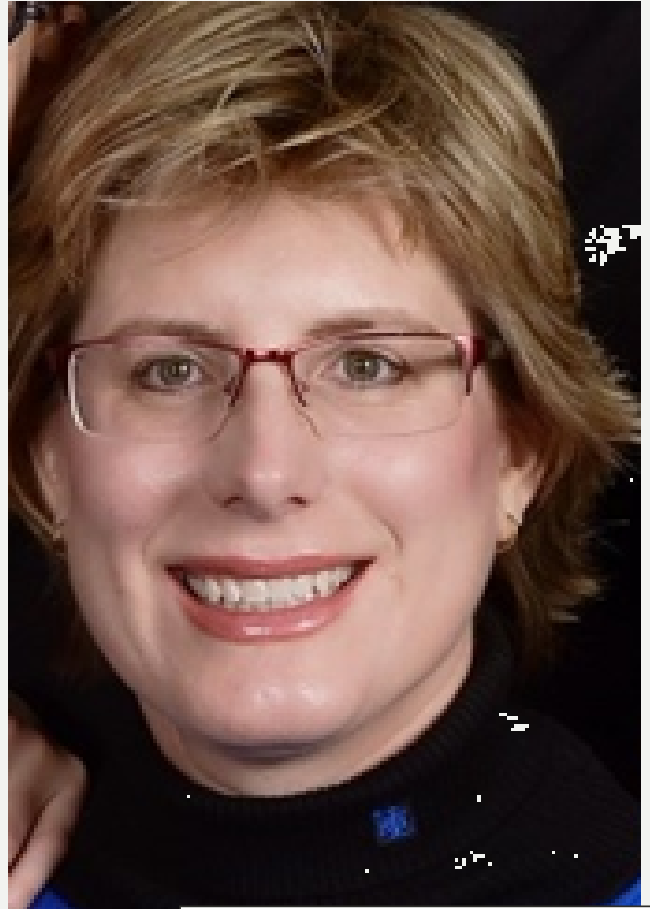
Occupation



Q: What is your vision for the future of ELPC?

To continue the work of self examination of past and current practices that may unintentionally exclude. To intentionally face systemic racism as individuals, the congregation, the community and the larger faith community.

Andrea DeVries



Questions for Nominees

Q: In what ways have you been active in your church and in your community?

ELPC Membership and Outreach,
Session, Finance Committee

Occupation

Public Health Research

Q: What is your vision for the future of ELPC?

That we continue to be a Cathedral of Hope, a place for people to worship, to find peace, to connect with each other and with God.

*Josh
Mattila*

