

## TODAY AT ELPC

Welcome to The Rev. Gavin Walton

We are pleased to welcome the Rev. Gavin Walton as our guest preacher this morning. A native of Pittsburgh, the Rev. Walton currently serves as pastor at Grace Memorial Presbyterian Church.

**Reckoning with Race: The History & Persistence of White Supremacy in the Church**

The Facing Systemic Racism Committee encourages congregational participation in the first presentation of the topic *Reckoning with Race: The History & Persistence of White Supremacy in the Church* beginning today during the Sunday School hour (9:45-10:45 am).

The presenter for each installment will be Dr Brock Bahler, a teaching professor at the University of Pittsburgh in the Religious Studies department. He received his PhD in philosophy from Duquesne University and teaches a variety of courses including Philosophy of Religion, Jewish Philosophy, and Philosophy of Race & Religion. He is member of the Open Door Presbyterian Church. We will consider not only how we continue to be implicated in this history, but will consider how we can lament, respond to, and develop reparations for this injustice.

The program will consist of a lecture and small group discussion in the Social Hall and on Zoom at 9:45 am. Zoom info: [https://zoom.us/j/188135194#success; Meeting ID: 188 135 194](https://zoom.us/j/188135194#success;MeetingID:188135194), or call 929.205.6099 (press # if asked for a personal ID).

**A Talk About Mental Health**

Youth, parents, and caregivers are invited to join us in the Social Hall today after the Sanctuary worship service for lunch and a program on talking together about mental health. The presentation will be led Carol Dundes, a counselor at Samaritan Counseling.

**Today's Deacons-On-Duty (DODs)**

Every Sunday, a DOD (*Deacon-on-Duty*) is available to assist with any emergencies that may occur during our services.

The *Journey* service DOD is Yodit Betru.

The *Sanctuary* service DOD is Jeff Fritz.



**Chapel Market Donations Needed**

Donations of fall and winter clothing are needed for the Chapel Market. Especially needed are men's pants, socks and underwear; shoes for all; and women's dresses and skirts. No summer clothing at the present time, please!

**Stewardship Season**

In the fall, we reap our harvests (sometimes with the grocery as our supplier). We enjoy the hard work of many as we make pumpkin bread and roast turkeys. At ELPC, we also enjoy fall by celebrating the fruits of our labors. We have worked hard to create a thriving church that serves the needs of our members, our community and our world. One way that we can celebrate and honor the work of the church is to pledge, to give the money that we worked hard to earn to our church where others are served. It is a beautiful balance and the wonderful view of the circle of life.

**Presbyterian Women Bible Study — Nov 1 and 7**

Join Presbyterian Women on Tuesday, Nov 1 from 10 am–12 pm (Hybrid) and/or on Monday, Nov 7 from 7–8:30 pm (Zoom only) for their Bible Study *Sabbath and Sunday*. If you're attending the Tuesday session in person, feel free to bring your own lunch. For more info and the Zoom link, please email [PW.ELPC@gmail.com](mailto:PW.ELPC@gmail.com).

**Fall Garden Clean Up Day — Nov 5**

Please join the Garden Crew on Saturday, Nov 5 for their final volunteer work day of 2022. Work will focus on the flower beds at the Highland entrance, in the Garth and Children's Play Yard, and will take approximately 2.5 hours to complete. Bring a pair of work gloves to the Highland driveway around 9 am. Please contact Don Breitbarth ([donbreitbarth@gmail.com](mailto:donbreitbarth@gmail.com)) if interested.

**Remembrance of Those Who Have Passed Away — Nov 6**

As part of our *All Saints' Day* service at 11 am on Sunday, Nov 6, we will remember those in our congregation and larger church family who have passed away since November 2021. Send your images and names to Norma in the church office (412.441.3800 x211) by Nov 3.

**Church Tours — Nov 6 and 20**

There will be a *Hidden Places* tour on Sunday, Nov 6, and a *Sanctuary and Chapel* tour on Sunday, Nov 20. Both tours follow the 11 am Sanctuary worship service. Please gather in the Highland Lobby to participate.

**Environmental Team Book Discussion — Nov 10**

The Environmental Team of the Justice Committee is reading *Blue Revolution: Unmaking America's Water Crisis* by Cynthia Barnett. Americans see water as abundant and cheap: we turn on the faucet and out it gushes. Most don't realize these freshwater sources are in deep trouble. Read the book, and join us on Thursday, Nov 10 at 7 pm for a discussion on Zoom (and possibly in person). For more info, contact Nancy Heastings ([n.heastings@comcast.net](mailto:n.heastings@comcast.net)).



*As a caring congregation of faith, we ask you to remember the following people in your prayers:*

Mike and Sherry Anderson's  
granddaughter Amber,  
Carol Chontos' friend Carolyn,  
Liz Hopkins, Morris Jordan,  
Joe Kennedy, Gail Mallory, Judy Menk,  
Jon Nelson's cousin Beth, and  
Vivienne Selia's friend Hetz.

*Condolences to the family of*

The Rev. Dr. J. Richard Szeremany *on his passing.*

*Condolences to Martha DeMarzi on her niece's husband's passing.*

*Condolences to Cathleen Malmstrom on her brother's passing.*

---

### Yoga Retreat — Nov 12

Please join Yamuna for a brief, but sweet *Yoga Retreat* on Saturday, Nov 12 from 9 am-Noon in the Sanctuary. This abbreviated retreat will include a yoga class, some meditation, and maybe an abbreviated JourneyDance experience. No lunch will be included; however, we invite all participants to bring their own lunch, and we can have an informal lunch together if we so choose! Suggested donation: \$20-\$40. RSVP to Norma (412.441.3800 x211). Limited to 20 participants. Bring your own matt and whatever else you would need (blanket, water bottle).

### Stewardship Sunday — Nov 13

On Stewardship Sunday, Nov 13, we will share the gifts of our pledges as well as food for our community. Please consider pledging and bringing some of these items to support ELPC as we work together to serve our world: cake mixes, toppings; canned peas, potatoes and/or tuna; crackers; cranberry sauce; jelly; gravy mix; cereal; pancake syrup; ramen noodles; soups/broth; or stuffing mix.

*Help Needed: Please plan to help the Neighbors Committee by carrying food forward during this Sanctuary worship service—and help move donated items immediately after worship so that they're ready for pickup.*

### ELPC Fall Pie Festival — Nov 20

The Spiritual Life Committee invites you to the first ever *ELPC Fall Pie Festival* in the Social Hall on Sunday, Nov 20 after the 11 am Sanctuary service. You are invited to bring your favorite fall pie (or cake or cookies) to share with the congregation. The Spiritual Life Committee will provide the whipped cream, ice cream, and warm drinks while we sample your favorite pies or other sweet treats. Please join us for a time of celebrating the fall harvest and anticipation of the arrival of the holiday season, then stay for the *Choral Festival* at 3 pm in the Sanctuary!

Visit us online at  
[www.ELPC.church](http://www.ELPC.church)

In our

COMMUNITY



### PA Interfaith Power and Light (IPL) Conference — Nov 13

The PA Interfaith Power and Light's Annual Conference will be held on Sunday, Nov 13 from 1 – 4 pm.

This year's theme is *Environmental Justice & Human Resilience*. The conference will offer a virtual keynote address and response panel session that will be broadcast across PA, and two workshops in each of our four, in-person locations. Southwest PA will be held at Duquesne University. ELPC is a member and supporter of PA IPL.

The keynote speaker, Dr. Joylette Portlock (Executive Director, Sustainable Pittsburgh), will be at Duquesne.

When you register you must choose between in person or virtual. The cost is \$25. There is a reduced rate for students and for those who are experiencing financial hardship.

A ZOOM link for the Annual Conference and additional information on speakers, workshop topics, and your workshop location will be emailed to you in early November.

Contact Kathy Hrabovsky for info (412.953.5202; outreach@paip.org).

---

## SUNDAY SCHOOL CLASSES FOR ALL AGES

**Nov 6 ♦ 9:45 to 10:45 am**

♦ ADULTS ♦

Journey with Scripture (Fellowship Rm) — Psalm 8; 1 Kings 5:1–6, 13–14; Mark 4:21–34, facilitated by Lora Bethea and Jan Irvin

Parenting Circle (Rm 213) — Reading of *Atlas of the Heart: Mapping Meaningful Connection and the Language of Human Experience* by Brené Brown, facilitated by Trish Buben

Seekers (Garth Overlook Rm) — “Chenoa Stock Shares Her Work in Peru,” facilitated by Gwen Puza

Soul Food (Good Samaritan Rm) — A continued discussion of the book *Fierce Love* by the Rev. Dr. Jacqui Lewis, led by the Rev. Joe Hajdu, and other class members

♦ CHILDREN & YOUTH ♦

Nursery (under 3) — Nursery Suite, Room 110a

Preschool — Nursery Suite, Room 110b

K-3rd grade — Room 206

4th-6th grade — Room 211

7th-12th grade — Second Floor Parlor



# EAST LIBERTY PRESBYTERIAN CHURCH

116 South Highland Ave., Pittsburgh, PA 15206 412.441.3800 [www.ELPC.church](http://www.ELPC.church)

*As a diverse community of believers, we strive to follow God — the Creator who calls us, Jesus who teaches us, and the Spirit who empowers us. We show God's unconditional love by providing a refuge for spiritual growth, ardently pursuing justice, and extending Christ's radical hospitality to all. (Strategic Vision mission statement, 2011)*

## OCTOBER 30, 2022 — 11 AM SANCTUARY WORSHIP TWENTY-FIRST SUNDAY AFTER PENTECOST

### TIME OF PREPARATION

Some assume peacemaking requires inactivity or silence in the face of disorder and injustice. But true peace is not passive quiet or the absence of action or the silence of indifference. Biblical peace is shalom, meaning completeness, well-being, and right relationship with God and each other. Silence or inaction amid grave partiality and inequality is not peace.

— Justin Giboney

There is something deeply hypocritical about praying for a problem you are unwilling to solve.

— Miroslav Volf

### MUSIC MINISTRY

“Praeludium in C, BuxWV 137”

Dieterich Buxtehude

Dr. Edward Alan Moore, *organ*

“Selection of Hymns for Bagpipes”

Palmer Shonk, *bagpiper*

### WELCOME & CHURCH NEWS

The Rev. Patrice L. Fowler-Searcy

### \* SHARING GOD'S PEACE

The Rev. Fowler-Searcy

Leader: La paz de Cristo esté con ustedes.

The peace of Christ be with you.

People: Y también contigo.

And also with you.

### CALL TO WORSHIP

Paige McKenzie and Melia Chandler

Leader: On this new morning and in every moment of our lives, gracious God,

People: From generation to generation, we praise your holy name.

Leader: Like our ancestors before us, we proclaim your greatness to our children,

People: For we have seen your deeds of power and witnessed your goodness in our lives.

Leader: As you have opened your hand to all, satisfying the desire of every living thing,

People: Open our hearts so that we might share the gifts we have received from you.

Leader: Let us worship God in gratitude and joy!

### \* PROCESSIONAL HYMN #385

“All People That on Earth Do Dwell”

OLD HUNDREDTH

### CALL TO CONFESSION

Paige McKenzie and Melia Chandler

### UNISON PRAYER OF CONFESSION

Paige McKenzie and Melia Chandler

Almighty God, we confess how hard it is to be your people. You have called us to be the church, to continue the mission of Jesus Christ to our lonely and confused world. Yet we acknowledge we are more apathetic than active, isolated than involved, callous than compassionate, obstinate than obedient, legalistic than loving. Gracious Lord, have mercy upon us and forgive our sins. Remove the obstacles preventing us from being your representatives to a broken world. Awaken **our hearts to the promised gift of your indwelling Spirit. This we pray in Jesus' powerful name.** Amen.

### TIME OF SILENT CONFESSION

\* Indicates where you may please rise in body or spirit.

\* Indicates where you may rise in body or spirit.

ASSURANCE OF GOD'S FORGIVENESS

Paige McKenzie and Melia Chandler

Leader: See what love God has given us, that we should be called children of God; and that is what we are forgiven, renewed, and empowered to live and love as we are loved. Friends, believe the Good News of the Gospel.

People: En Jesucristo tenemos perdón.  
¡Alaben a Dios!

In Jesus Christ, we are forgiven.  
Praise God!

SUNG RESPONSE HYMN #431

“Forgive Us, Lord”

CONFESIÓN

SCRIPTURE LESSON

Isaiah 1:10-18

Jeff Fritz

MOMENTS WITH OUR CHILDREN

The Rev. Heather Schoenewolf

*Children in preschool through grade 3 are invited to the Chapel for a time of learning together. Children younger than age 3 are welcome to attend, if accompanied by their parents. Parents and caregivers should meet their children in the back of the Chapel during the Doxology, when children will return to the worship service.*

*The nursery is open to young children under the age of 3. Please note that attendance may be limited based on staff to child ratios, so we can only ensure participation on a first-come, first-serve basis. Parents/caregivers must complete a registration form and sign children in and out of the nursery each day.*

*Parents/caregivers are welcome to accompany their children to the nursery, and the service will be livestreamed into that space.*

HYMN #379

“We Shall Overcome”

WE SHALL OVERCOME

PRAYER OF ILLUMINATION

The Rev. Gavin Walton  
Pastor, Grace Memorial Presbyterian Church

GOSPEL LESSON

Luke 19:1-11

The Rev. Walton

SERMON

“May I Speak?”

The Rev. Walton

TIME OF SILENT REFLECTION

PRAYERS OF INTERCESSION & THE LORD'S PRAYER

The Rev. Schoenewolf

*The Lord's Prayer can be found on pg. 35 (English), on pg. 40 (Español) or on pg. 45 (한국어) in the Glory to God hymnal.*

STEWARDSHIP MINUTE FOR MISSION

Barbara Griffin

OFFERING INVITATION

Barbara Griffin

*We offer our gifts in response to God's love, and the grace of Jesus Christ, which we seek to make known through the ministries of this congregation.*

*You are invited to use the QR code to the right if you would like to make a donation in support of ELPC. A donation box is also available in the Sanctuary.*



OFFERTORY ANTHEM

“This L'il Light of Mine”

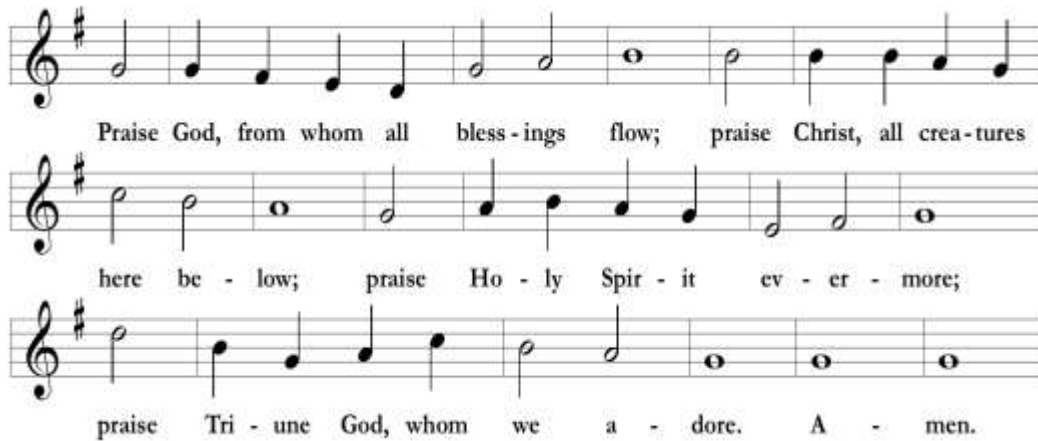
arr. Anthony T. Leach

*This l'il light of mine, I'm gonna let it shine.  
Everywhere I go, I'm gonna let it shine.  
In the neighborhood, I'm gonna let it shine.*

\* Indicates where you may rise in body or spirit.

\* DOXOLOGY AT THE PRESENTATION

OLD HUNDREDTH



\* PRAYER OF THANKSGIVING & DEDICATION

The Rev. Fowler-Searcy  
The Rev. Schoenewolf

Leader:	El Señor esté con ustedes.	The Lord be with you.
People:	Y también contigo.	And also with you.
Leader:	Levantemos nuestros corazones.	Lift up your hearts.
People:	Lo tenemos levantado al Señor.	We lift them up to the Lord.
Leader:	Demos gracias al Señor nuestro Dios.	Let us give thanks to the Lord our God.
People:	Es justo dar gracias y alabanzas a Dios.	It is right to give God thanks and praise.
Leader:	God of justice and grace, as countless ones before us, we offer ourselves in love and service to you and to the fulfilling of your will on earth. With all of the saints, we hear the cry of the suffering, and the voice of Jesus telling us to administer mercy, kindness, and justice to the sick, to the imprisoned, and the oppressed. Receive these gifts with the dedication of our lives toward continuing the saints' work in Christ's name. Amen.	

\* RECESSIONAL HYMN #372

"O for a World"

AZMON

\* CHARGE & BENEDICTION

The Rev. Walton

POSTLUDE

"Highland Cathedral"

arr. James Wetherald  
Dr. Moore, *organ*  
Palmer Shonk, *bagpiper*

*Our worship concludes with the postlude. For the benefit of those who wish to listen to the postlude, please refrain from visiting with your neighbors until you have left the sanctuary, or until the postlude has concluded.*



*As part of ELPC's mission to extend radical hospitality to all, our full worship service is now being livestreamed on Facebook and archived at [www.ELPC.church](http://www.ELPC.church). This notice is to inform you that by being in attendance, you give permission for incidences where you appear within the video. Should you have any questions, please see one of our pastors.*

*Please silence all electronic devices before the service begins.*

#### ♦ PARTICIPANTS IN TODAY'S SERVICE

Preaching: The Rev. Gavin Walton  
*Pastor, Grace Memorial Presbyterian Church*

Liturgists: The Rev. Patrice L. Fowler-Searcy  
The Rev. Heather Schoenewolf  
Jeff Fritz  
Barbara Griffin  
Paige McKenzie and Melia Chandler

Musicians: Dr. Edward Alan Moore  
*Organist/Music Director*  
ELPC Chancel Choir  
Palmer Shonk, *Bagpiper*

Beadle: Lenore Williams

Crucifer: Mark Statler

Sound: Tim Benedict  
Wayne Gaines

#### ♦ SUNDAY COFFEE FELLOWSHIP

Coffee and water are available in the Balaka Room.

#### ♦ WORSHIP FLOWERS

If you would like to sponsor flowers for our weekly worship service in honor or memory of a loved one, contact Frances Wilson ([wilson.franr@gmail.com](mailto:wilson.franr@gmail.com)). The cost is \$175.

*Our beautiful arrangements are provided by Bloom Brigade ([www.bloombrigade.com](http://www.bloombrigade.com)).*

#### ♦ SUNDAY WORSHIP

8:45 am.....Journey Worship. An interactive, energetic service for those seeking a fresh encounter with the gospel of Jesus Christ. In Social Hall.  
Nov 6 — The Rev. Heather Schoenewolf preaching.

11 am.....Sanctuary Worship. Our largest service with a multi-cultural congregation and music from organ, piano and choir.  
Nov 6 — The Rev. Heather Schoenewolf preaching.

#### ♦ WEEKDAY WORSHIP

Taizé: Prayerful Song and Quiet Meditation  
Chants and periods of meditative silence modeled after the Taizé community in France. Rev. BJ Woodworth leads this service in the Chapel.

Wednesdays, 7 pm



Prayer Room (*in Highland Ave hallway*)

Come to sit and pray in silence. Come to experience the quiet in the midst of the wonderful busyness.

Available everyday

#### ♦ WEEKLY SPIRITUAL LIFE OFFERINGS

Contemplative Prayer

Rev. BJ Woodworth will lead a time on Zoom (Meeting ID 959 8065 3992) to practice a variety of contemplative prayer practices utilizing fixed prayers, scripture, music, silence, art and our bodies.

Mondays, 7:30 to 8 am

Meeting ID #959 8065 3992

Passcode: bestill

Cathedral Yoga

Yamuna will lead yoga in-person at 6 pm in the Sanctuary (before the 7 pm Taizé Prayer service).

Wednesdays, 6 to 7 pm

## WELCOME VISITORS!

We are grateful to have you join us for worship this morning and ask you to register your name in our red Friendship Books.

*To learn more about our programs, church activities and volunteer services, we invite you to also:*

Pick up a copy of our newsletter, the *Reaching Out*, either in the Narthex or at the Hospitality Desk near the Highland Avenue doors.

Attend an *Inquirers' Class* to learn more about ELPC, Presbyterian theology, and to explore membership. Please contact Megan Leisher for info or to register for future classes ([MeganL@coh.net](mailto:MeganL@coh.net)).

Call the Church Office (412.441.3800), or visit the ELPC website at [www.ELPC.church](http://www.ELPC.church).