



# Summer

worship

Sunday

**August 27, 2023**

10 am • Courtyard



East Liberty  
Presbyterian Church

[www.ELPC.church](http://www.ELPC.church)



# EAST LIBERTY PRESBYTERIAN CHURCH

116 South Highland Ave., Pittsburgh, PA 15206 412.441.3800 [www.ELPC.church](http://www.ELPC.church)

*As a diverse community of believers, we strive to follow God — the Creator who calls us, Jesus who teaches us, and the Spirit who empowers us. We show God's unconditional love by providing a refuge for spiritual growth, ardently pursuing justice, and extending Christ's radical hospitality to all. (Strategic Vision mission statement, 2011)*

## AUGUST 27, 2023 — 10 AM SUMMER WORSHIP THIRTEENTH SUNDAY AFTER PENTECOST

### TIME OF PREPARATION

They who wait for the Lord shall renew their strength; they shall mount up with wings like eagles;  
they shall run and not be weary; they shall walk and not faint. — *Isaiah 40:31*

I am no longer accepting the things I cannot change. I am changing the things I cannot accept.  
— *Angela Davis*

### GATHERING MUSIC *(music printed in bulletin)*

#679

“Let the Whole Creation Cry”

SALZBURG

#667

“When Morning Gilds the Skies”

LAUDES DOMINI

### WELCOME & CHURCH NEWS

The Rev. BJ Woodworth

### \* SHARING GOD’S PEACE

The Rev. Woodworth

Leader: La paz de Cristo esté con ustedes.

The peace of Christ be with you.

People: Y también contigo.

And also with you.

### CALL TO WORSHIP

Hannah Moon and Kevin Lee

Leader: You, who are many, are transformed to become one in Christ.

People: We, who are many, are called to worship God, the Three in One.

Leader: Let us worship God!

### \* OPENING HYMN #307 *(music printed in bulletin)*

CWM RHONDDA

“God of Grace and God of Glory”

### CALL TO CONFESSION

The Rev. Woodworth

### PRAYER OF CONFESSION

The Rev. Woodworth

**Forgiving God, we confess that we are conformed to this world. We conform to this world's frantic pace, too hectic to notice all the blessings you provide. We conform to this world's reckless waste, exploiting what you entrust to our care. We conform to this world's reckless waste, exploiting what you entrust to our care. We conform to this world's shallow values, oblivious to the giftedness of people different from us. We conform to the world's impatient attitudes, preferring the latest instead of the lasting. Forgive our conformity and transform us, O God. We pray in Jesus' name. Amen.**

### TIME OF SILENT CONFESSION

\* Indicates where you may please rise in body or spirit.

\* Indicates where you may rise in body or spirit.

ASSURANCE OF GOD'S FORGIVENESS

The Rev. Woodworth

Leader: God is with us, therefore we have not been lost to sin but redeemed by grace. Friends, believe the good news of the gospel.

People: En Jesucristo tenemos gratuito y perdón. In Jesus Christ, we are forgiven.  
¡Alaben a Dios! Praise God!

RESPONSIVE HYMN #519 (music printed in bulletin)

JERNIGAN

“You Are My Strength When I Am Weak”

EPISTLE LESSON

Romans 12:1-8

Hannah Moon

GOSPEL LESSON

Matthew 16:13-20

Kevin Lee

MOMENTS WITH OUR CHILDREN

Sara Hackett

*Children of any age are welcome to come forward for Moments with our Children.*

*Children in preschool through grade 3 are invited to the Chapel for a time of learning together. Children younger than age 3 are welcome to attend, if accompanied by their parents. Parents and caregivers should meet their children in the back of the Chapel during the Doxology, when children will return to the worship service. The nursery is open to young children under the age of 3. Please note that attendance may be limited based on staff to child ratios, so we can only ensure participation on a first-come, first-serve basis. Parents/caregivers must complete a registration form and sign children in and out of the nursery each day.*

\* HYMN #837 (music printed in bulletin)

SHOWALTER

“Leaning on the Everlasting Arms”

HEBREW SCRIPTURE LESSON

Exodus 1:8-2:10

The Rev. Heather Schoenewolf

SERMON

“Portraits of Strength”

The Rev. Schoenewolf

TIME OF SILENT REFLECTION

PRAYERS OF INTERCESSION & THE LORD'S PRAYER

The Rev. Schoenewolf

ELPC GOOD NEWS

Youth Ministry

Taylor Reese

OFFERING INVITATION

The Rev. Schoenewolf

*We offer our gifts in response to God's love, and the grace of Jesus Christ, which we seek to make known through the ministries of this congregation.*

*You are invited to use the QR code to the right if you would like to make a donation in support of ELPC. A donation box is also available in the Narthex.*



OFFERTORY ANTHEM

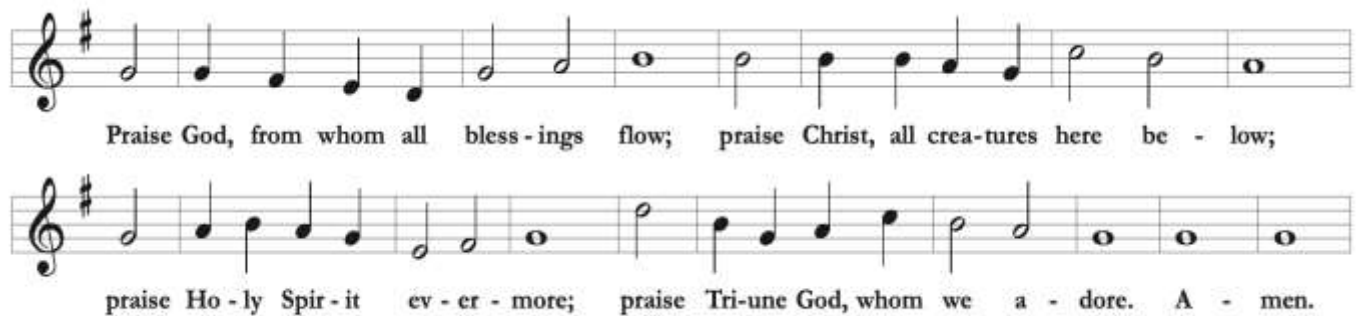
“For the Beauty of the Earth”

John Rutter

\* Indicates where you may rise in body or spirit.

\* DOXOLOGY AT THE PRESENTATION

OLD HUNDREDTH



\* PRAYER OF THANKSGIVING & DEDICATION

The Rev. Schoenewolf  
The Rev. Woodworth

Leader: El Señor esté con ustedes.

People: Y también contigo.

Leader: Levantemos nuestros corazones.

People: Lo tenemos levantado al Señor.

Leader: Demos gracias al Señor nuestro Dios.

People: Es justo dar gracias y  
alabanzas a Dios.

Leader: Almighty God, you work upon us and through us in surprising and miraculous ways, calling out our gifts, our courage, our love and using us to do your work. Take these offerings and use them for your people, in this land and throughout your world. In Jesus' name we pray.

People: Amén.

The Lord be with you.

And also with you.

Lift up your hearts.

We lift them up to the Lord.

Let us give thanks to the Lord our God.

It is right to give God  
thanks and praise.

Amen.

\* CLOSING HYMN #716 (*music printed in bulletin*)

BEACH SPRING

“God, Whose Giving Knows No Ending”

\* CHARGE & BENEDICTION

The Rev. Schoenewolf



*As part of ELPC's mission to extend radical hospitality to all, our full worship service is now being livestreamed on Facebook and archived at [www.ELPC.church](http://www.ELPC.church).*

*This notice is to inform you that by being in attendance, you give permission for incidences where you appear within the video.*

*Should you have any questions, please see one of our pastors.*

*Please silence all electronic devices before the service begins.*

#### ♦ PARTICIPANTS IN TODAY'S SERVICE

Preaching: The Rev. Heather Schoenewolf  
Liturgists: The Rev. BJ Woodworth  
Sara Hackett  
Hannah Moon and Kevin Lee  
Taylor Reese  
Musicians: Ethan LaPlaca,  
*Guest Keyboard / Conductor*  
ELPC Summer Choir  
Sound: Tim Benedict  
Wayne Gaines

#### ♦ SUNDAY FELLOWSHIP TIME

Water is available in the Highland Lobby.

#### ♦ WORSHIP FLOWERS

If you would like to sponsor flowers for our weekly worship service in honor or memory of a loved one, contact Frances Wilson ([wilson.franr@gmail.com](mailto:wilson.franr@gmail.com)). The cost is \$100 during the summer worship schedule.

#### ♦ SUNDAY WORSHIP

10 am.....Summer Worship. Our largest service with a multi-cultural congregation and music from piano and choir and soloists. The service is also livestreamed on YouTube and Facebook. Weather permitting, this service will be held in the Courtyard.

Additional seating is available in the Garth Overlook Room if you prefer to sit inside.

Sept 3 — The Rev. BJ Woodworth preaching.

#### ♦ WEEKDAY WORSHIP

Taizé: Prayerful Song and Quiet Meditation  
Chants and periods of meditative silence modeled after the Taizé community in France. Rev. BJ Woodworth leads this service in the Chapel.

Wednesdays, 7 pm

Prayer Room (*in Highland Ave hallway*)

Come to sit and pray in silence. Come to experience the quiet in the midst of the wonderful busyness.

Available everyday

#### ♦ WEEKLY SPIRITUAL LIFE OFFERINGS

Meditation Hour

Join John Benedict, retired psychologist and practitioner of insight meditation, in the Chapel for an hour devoted to meditation, which includes an opening reading, silent sitting, and walking. All are welcome!

Tuesdays, 6-7 pm

Cathedral Yoga

Yamuna will lead yoga in-person in the Sanctuary.

Wednesdays, 6 to 7 pm (*before Taizé*)

Journey Dance

Enjoy an evening of healthy, energizing, funky and divine dancing on the 3rd Friday of every month.

Sept 15, Oct 20, Nov 17

7-8:30 pm

## WELCOME VISITORS!

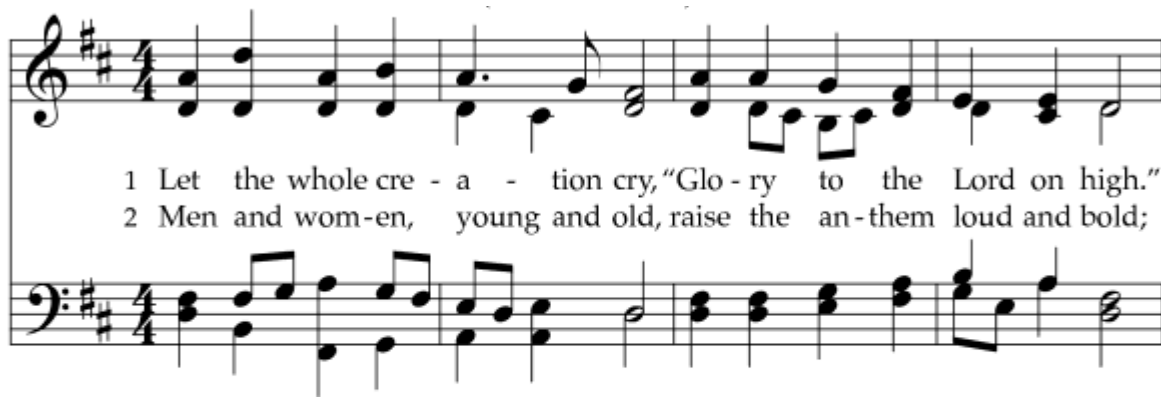
We are grateful to have you join us for worship this morning and ask you to register your name in our red Friendship Books.

*To learn more about our programs, church activities and volunteer services, we invite you to also:*

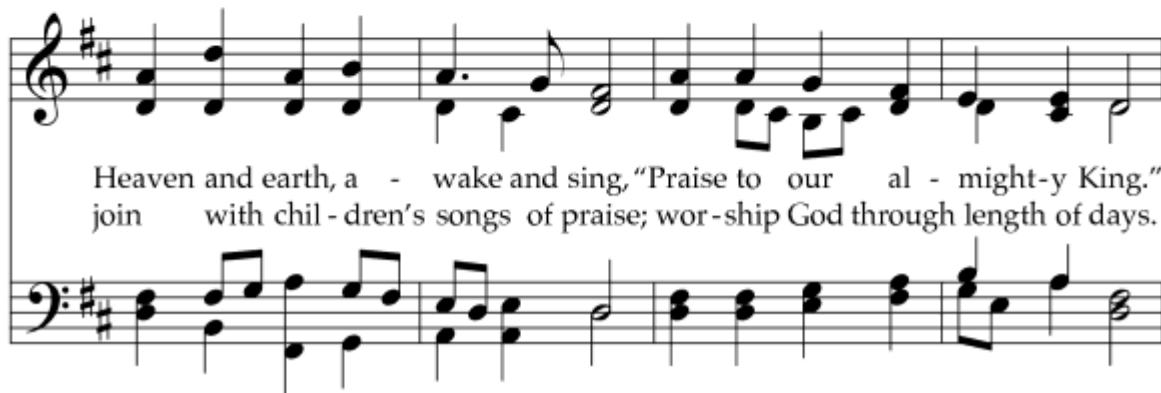
Pick up a copy of our newsletter, the *Reaching Out*, either in the Narthex or at the Hospitality Desk near the Highland Avenue doors.

Attend an *Inquirers' Class* to learn more about ELPC, Presbyterian theology, and to explore membership. Please see one of the Pastors to attend, or contact Megan Leisher for more info on future classes ([MeganL@coh.net](mailto:MeganL@coh.net)).

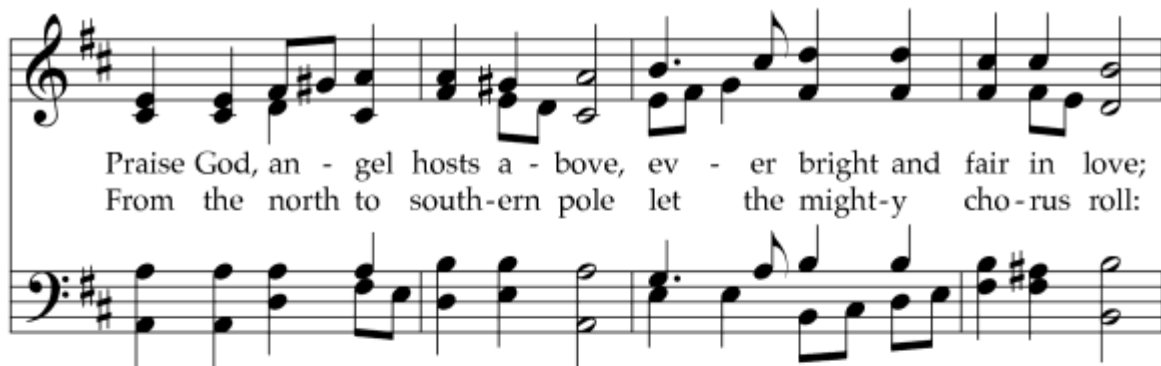
Call the Church Office (412.441.3800), or visit the ELPC website at [www.ELPC.church](http://www.ELPC.church).



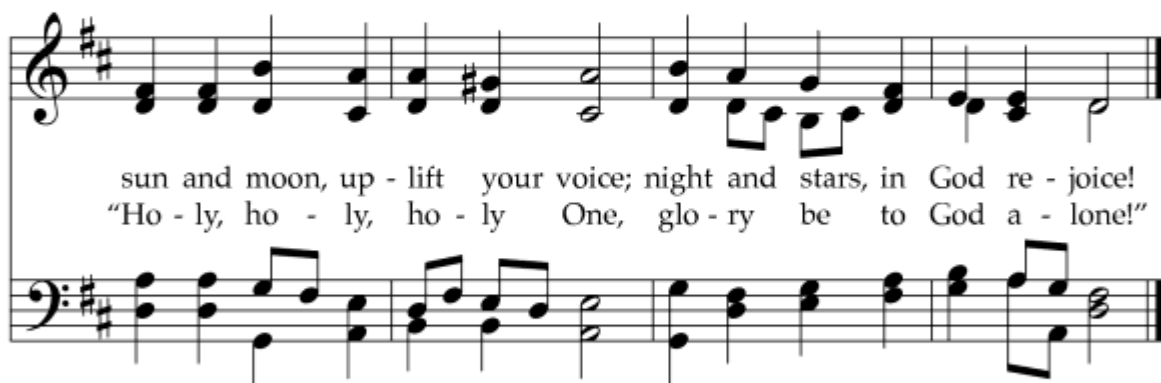
1 Let the whole cre - a - tion cry, "Glo - ry to the Lord on high."  
 2 Men and wom-en, young and old, raise the an-them loud and bold;



Heaven and earth, a - wake and sing, "Praise to our al - might-y King."  
 join with chil - dren's songs of praise; wor-ship God through length of days.



Praise God, an - gel hosts a - bove, ev - er bright and fair in love;  
 From the north to south-ern pole let the might-y cho-rus roll:



sun and moon, up - lift your voice; night and stars, in God re - joice!  
 "Ho - ly, ho - ly, ho - ly One, glo - ry be to God a - lone!"

Originally this text was more than twice as long as the present version because it followed Psalm 148 in directing additional parts of the created order to praise God. This wide-ranging text is set here to a suitably expansive and well-crafted 17th-century chorale melody.

#667 — WHEN MORNING GILDS THE SKIES

1 When morn - ing gilds the skies, my heart a - wak - ing  
 2 Does sad - ness fill my mind? A so - lace here I  
 3 Let earth's wide cir - cle round in joy - ful notes re -  
 4 Be this, while life is mine, my can - ti - cle di -

cries: may Je - sus Christ be praised! A -  
 find: may Je - sus Christ be praised! Or  
 sound: may Je - sus Christ be praised! Let  
 vine: may Je - sus Christ be praised! Be

like at work and prayer to Je - sus I re -  
 fades my earth - ly bliss? My com - fort still is  
 air and sea and sky from depth to height re -  
 this the e - ter - nal song through all the a - ges

pair: may Je - sus Christ be praised!  
 this: may Je - sus Christ be praised!  
 ply: may Je - sus Christ be praised!  
 long: may Je - sus Christ be praised!

This is not just a morning hymn, though this excerpt from an English translation of an early 19th-century German text may not convey how thoroughly the original deals with different kinds of time throughout the day. The tune was composed as a setting for this English text.

1 God of grace and God of glo - ry, on thy peo - ple  
 2 Lo! the hosts of e - vil round us scorn thy Christ, as -  
 3 Cure thy chil - dren's war - ring mad - ness; bend our pride to  
 4 Save us from weak res - ig - na - tion to the e - vils

pour thy power; crown thine an - cient chur - ch's sto - ry; bring its  
 sail his ways! From the fears that long have bound us free our  
 thy con - trol; shame our wan - ton, self - ish glad - ness, rich in  
 we de - plore. Let the gift of thy sal - va - tion be our

bud to glo - rious flower. Grant us wis - dom, grant us cour - age,  
 hearts to faith and praise. Grant us wis - dom, grant us cour - age,  
 things and poor in soul. Grant us wis - dom, grant us cour - age,  
 glo - ry ev - er - more. Grant us wis - dom, grant us cour - age,

for the fac - ing of this hour, for the fac - ing of this hour.  
 for the liv - ing of these days, for the liv - ing of these days.  
 lest we miss thy king - dom's goal, lest we miss thy king - dom's goal.  
 serv - ing thee whom we a - dore, serv - ing thee whom we a - dore.

This stirring hymn used at the opening of Riverside Church in New York in 1930 was penned by its widely-known and influential pastor, and it has gained a firm place in English-language hymnals around the world. The Welsh tune name honors the Rhondda Valley in Glamorganshire.



# #519 — YOU ARE MY STRENGTH WHEN I AM WEAK

Capo 5: (C) (G) (Am7) (Em) (C)

F C Dm7 Am F

You are my strength when I am weak; you are the trea-sure that I

(Dm7) (C) (G7) (C) (G7) (C) (G)

Gm7 F C7 F C7 F C

seek; you are my all in all. When I fall down, you pick me

(Am7) (Em) (C) (Dm7) (C) (G7) (F) (C)

Dm7 Am F Gm7 F C7 B<sup>b</sup> F

up; when I am dry, you fill my cup; you are my all in all.

(C) (G) (Am7) (Em) (Dm7) (C) (G) (C) (G7)

F C Dm7 Am Gm7 F C F C7

Je - sus, Lamb of God, wor - thy is your name!

(C) (G) (Am7) (Em) (Dm7) (C) (G7) (F) (C)

F C Dm7 Am Gm7 F C7 B<sup>b</sup> F

Je - sus, Lamb of God, wor - thy is your name!

*\*May be sung as a canon.*

The expression "all in all," meaning "everything," owes much of its endurance in English usage to its appearance in 1 Corinthians 15:28, though many phrases leading up to it here have parallels in Hebrew Scripture. The second section echoes the song to the Lamb in Revelation 5:12.

1 What a fel-low-ship, what a joy di-vine, lean-ing on the ev-er-  
 2 O how sweet to walk in this pil-grim way, lean-ing on the ev-er-  
 3 What have I to dread, what have I to fear, lean-ing on the ev-er-

last-ing arms; what a bless-ed-ness, what a peace is mine,  
 last-ing arms; O how bright the path grows from day to day,  
 last-ing arms? I have bless-ed peace with my Lord so near,

*Refrain*

lean-ing on the ev-er-last-ing arms. Lean-ing, Lean-ing on Je-sus,  
 lean-ing, safe and se-cure from all a-larms; lean-ing on  
 Je-sus, lean-ing on Je-sus, lean-ing on the ev-er-last-ing arms.

The composer of the tune (and creator of the refrain) asked the author of the stanzas to write a hymn based on the latter part of Deuteronomy 33:27 (as worded in the King James Version): "Underneath are the everlasting arms." Their joint effort has proved very popular.

Capo 3: (D) F (Bm) Dm (G) B $\flat$



1 God, whose giv - ing knows no end - ing, from your rich and  
 2 Skills and time are ours for press - ing toward the goals of  
 3 Trea - sure, too, you have en - trust - ed, gain through powers your

(D) F (Bm) Dm



end - less store, na - ture's won - der, Je - sus' wis - dom, cost - ly  
 Christ, your Son: all at peace in health and free - dom, rac - es  
 grace con - ferred: ours to use for home and kin - dred, and to

(G) B $\flat$  (D) F (A) C



cross, grave's shat - tered door: gift - ed by you, we turn  
 joined, the church made one. Now di - rect our dai - ly  
 spread the gos - pel word. O - pen wide our hands in

(Bm) Dm (F $\sharp$ m) Am (Bm) Dm (G) B $\flat$  (A) C (D) F



to you, of - fer - ing up our - selves in praise; thank - ful song shall  
 la - bor, lest we strive for self a - lone. Born with tal - ents,  
 shar - ing, as we heed Christ's age - less call, heal - ing, teach - ing,

(Bm) Dm (G) B $\flat$  (D) F



rise for - ev - er, gra - cious do - nor of our days.  
 make us ser - vants fit to an - swer at your throne.  
 and re - claim - ing, serv - ing you by lov - ing all.

*Guitar chords do not correspond with keyboard harmony.*

This text on stewardship was one of about 450 submissions in a search for such hymns conducted by the Hymn Society of America in 1961. These words are well grounded by their musical setting, an early American shape note tune named for a Baptist church in Harris County, Georgia.

TEXT: Robert L. Edwards, 1961, alt.

MUSIC: *The Sacred Harp*, 1844; harm. James H. Wood, 1958

Text © 1961, ren. 1989 *The Hymn Society* (admin. *Hope Publishing Company*)

Music Harm. © 1958, ren. 1986 *Broadman Press* (admin. *Music Services*)

BEACH SPRING

8.7.8.7.D

CCLI #689547



# East Liberty Presbyterian Church

---

[www.ELPC.church](http://www.ELPC.church)

## TODAY AT ELPC

### Letters to Legislators Event — TODAY

Our Mission Board Committees are hosting a *Letters to Legislators* event in the Social Hall after worship today. Participants will have an opportunity to write to legislators advocating for action on a variety of social justice issues — including driving privileges for immigrants; fair housing and nondiscrimination policies; environmental protections; prisoners' rights; gun violence; and more. Sample letters and emails will be provided and a light lunch will be served. For those unable to attend in person, templates and instructions will be posted to the ELPC website after the event for your use. Contact Carol Chonoska for info (carolchonoska@gmail.com).

### Prepare for PW Bible Study — Today

Presbyterian Women (PW) will be available after worship today to distribute study books and answer your questions about their upcoming 2023-2024 Bible Study, *Sacred Encounters*. They will be near the front of the worship space after the service to distribute bible study books and answer your questions.

PW Bible Study begins on Tuesday, Sept 5 from 10 am–Noon (hybrid), and Monday, Sept 11 from 7–8:30 pm (Zoom). For more info, email PW.ELPC@gmail.com.

**Today's Deacon-On-Duty (DOD)** Every Sunday, a DOD (Deacon-on-Duty) is available to assist with any emergencies that may occur during our services. The Summer service DOD is Jeff Fritz



### Participate in a Listening Session: August 28

As part of a final formal phase of information gathering, the Pastoral Nominating Committee (PNC) is hosting a series of *Listening Sessions* on Sundays and weekdays in August.

The purpose of the sessions is to get qualitative feedback on what we most need in terms of leadership for our congregation. These sessions are serving as a complement to the information gathered from the survey. We will use the information to guide our process to identify best fit pastoral leadership.

Please contact Megan Leisher (MeganL@coh.net) if you are able to attend this session:

- Monday, Aug 28 at 6:30 pm (Zoom)

### Rally Day — Sept 10

We will resume our traditional worship schedule and Church School classes for persons of all ages on Sunday, Sept 10.

### LGBTQIA+ spiritual gathering on Sept 3 at 11:30am

You are invited to attend our LGBTQIA+ Ministry's next Spiritual Gathering on Sept 3 after worship. Join us and share conversation and lunch. Allies and LGBTQIA+ folks alike welcome! Contact Wil Forrest to attend or for more info (Wil@coh.net).

### ELPC's Choirs Resume Rehearsals — Sept 7 and 12

On Thursday, Sept 7, the *Journey Praise Team* resumes rehearsals from 5:30-6:30 pm in the Social Hall, and the *Chancel Choir* resumes rehearsals from 7-8:30 pm in the Sanctuary.

On Tuesday, Sept 12, the *ELPC Ringers/Handbell Choir* will rehearse from 6-7 pm in Dr. Ed Moore's office on the 3rd floor.

If you are interested in joining the *Journey Praise Team*, contact director Gerald Savage (soundpill@soundpill.net). If you would like to join the *Chancel Choir* or *Handbell Choir*, contact director Dr. Ed Moore (EdM@coh.net).

### Inquirer's Class—Sept 10

If you'd like to find out more about membership at ELPC please join us after worship on Sept 10 for an Inquirer's Class. This class will be held in the Fellowship Space. Please contact Megan Leisher (MeganL@coh.net) for the zoom link if you cannot attend in person.

### Sharing ELPC Good News

This summer, as part of our Sunday service at 10 am, we will be sharing ELPC GOOD News! Who is someone you've noticed quietly serving, giving, loving, or simply using their gifts and passion as an embodiment of the mission and vision of ELPC? As a person comes to mind, consider "telling" on them so we can see and hear God at work through our siblings as they live out the good news of the gospel, in our church and/or in their daily life. Email Pastors Patrice (PatriceFS@coh.net), Heather (HeatherS@coh.net), or BJ (BJW@coh.net).

### CAT Scan Results

The report of ELPC's CAT Scan results are now available electronically and in paper, and will also be presented at the next *The More You Know* session on Sept 24. Scan the QR code to view the results or pick up a paper copy.





*As a caring congregation of faith, we ask you to remember the following people in your prayers:*

Chris Martin, Edith Battle,  
JoAnn and Carol Chonoska,  
Debbie Hurrell's sister Beth,

Diane Jackson's brother-in-law Dan, Paul Miller,

Fran Wilson, Jon Nelson's daughter Rachel

*Condolences to Pamela Napier & family on the passing of her sister,  
Andrea Napier*

#### Meditation Hour — Tuesdays

The Spiritual Life Committee invites you to join John Benedict in the Chapel each Tuesday from 6-7 pm for an hour devoted to meditation. John is a retired psychologist and a long time student and practitioner of insight meditation. No experience necessary, and all are welcome!

#### Download the ELPC App

ELPC published a mobile app to serve as a hub for all ELPC-related news, events, and digital offerings. On the app, you can stream live and archived worship services and concerts, watch sermons, listen to our Taizé podcast, download bulletins, browse events, connect with our social media pages, read up-to-date news, and more. The app is available for free on Google Play™ and the App Store®. Search for "East Liberty Presbyterian." Google Play is a trademark of Google LLC. App Store is a registered trademarks of Apple Inc.



#### Volunteers Needed to be Beadles and Crucifers

There are many ways to participate in our worship services! We are currently seeking volunteers to be a Beadle or Crucifer at our 11 am Sanctuary worship service. The duties of the Beadle include processing at the beginning of the service with the Bible, and the Crucifer also processes while carrying the cross. If you would like to help, or have questions about these roles, please speak to one of today's Beadles, or email Mario Seneca (seneca459@hotmail.com).

## Chapel Market

Expanded Hours  
and Donation Request

The Chapel Market has expanded its hours of operation! It is now open on the 1st and 3rd Tuesday of each month from 5-7 pm, in addition to being open every Thursday from 10 am—Noon. The Chapel Market is also seeking donations of toiletry items. Donations can be left at the Highland Lobby, or dropped off at the Chapel Market when open.



In our

## COMMUNITY



#### Patient Service Representative Program — Sept 1 Deadline

The *Innovation District Skills Alliance* (IDSA) is a program that connects area residents to living wages and career advancement opportunities. Their 3-week training course starts on Sept 18, held Monday through Friday, with hybrid, virtual, in-person and self-guided sessions.

The program includes a stipend and gift cards during participation; a laptop; targeted job-readiness training; and an opportunity to interview for a patient service representative position with UPMC.

Eligibility requirements include having a high school diploma or GED; are unemployed or underemployed; and ability to commit to a 3-week training period.

The application deadline is Noon on Sept 1. Apply now by visiting [www.pittsburgh-id.com/IDSA](http://www.pittsburgh-id.com/IDSA).

Contact Oliver Cunningham at JFCS Career Services/IDSA for more info (OCunningham@jfcspgh.org).

#### EECM Coat Drive — through Oct 13

You can help those in need by donating new or gently used winter coats to the *EECM Coat Drive*. Drop off new coats (with tags), and gently used coats, by Oct 13 at East End Cooperative Ministry (6140 Station Street, 15206, Entrance A) or at Highmark Whole Care (6033 Broad St, 15206).

You can also drop off used winter coats at Strongll Dry Cleaners (7620 Frankstown Ave, 15208) from Sept 5 to Oct 13 to have them cleaned for free.



## DINNER and SABBATH Documentary

Friday, Oct 27 • 5:30-8:30 pm

The Spiritual Life and Justice Committees invite you to an evening of fellowship, food, and formation around the ancient practice of *Sabbath*.

*Join us for a meal, film viewing and conversation.*

We will gather for a simple meal together and then view the 2-hour documentary, *SABBATH: An Ancient Practice Meets the Modern World*. The film is told as a collection of short stories, exploring the history of one of the world's most important spiritual practices and its timeless relevance for a stressed-out, modern world. From the Biblical accounts of Creation, to the 10 Commandments, to the Puritans landing in the New World, to the contemporary practice of a "tech-sabbath" — *SABBATH* ties together our collective history, our health practices, our response to God's invitation and the search for a more sustainable way of life. RSVP to Norma by Oct 22 (412.441.3800 x211).