



EAST LIBERTY PRESBYTERIAN CHURCH

116 South Highland Ave., Pittsburgh, PA 15206 412.441.3800 www.ELPC.church

As a diverse community of believers, we strive to follow God — the Creator who calls us, Jesus who teaches us, and the Spirit who empowers us. We show God's unconditional love by providing a refuge for spiritual growth, ardently pursuing justice, and extending Christ's radical hospitality to all. (Strategic Vision mission statement, 2011)

FIRST SUNDAY IN LENT FEBRUARY 18, 2024 — 11 AM SANCTUARY WORSHIP

TIME OF PREPARATION

Holy God, by the grace of Jesus Christ, you know the tests and trials we face. Walk with us through this wilderness. Come to us with ministers of healing and visit us with messengers of hope so that we may return to you in faith, believing the good news of the gospel through Jesus Christ our Savior. Amen.

PRELUDE

“Audi, benigne conditor”

Dr. Edward Alan Moore, *organ*

Gerald Near

*O Kind Creator, bow thine ear to mark the cry, to know the tear
Before thy throne of mercy spent in this thy holy fast of Lent.*

“Adoration”

Florence Price

WELCOME & CHURCH NEWS

The Rev. BJ Woodworth

* SHARING GOD’S PEACE

The Rev. Woodworth

Leader: La paz de Cristo esté con ustedes.

The peace of Christ be with you.

People: Y también contigo.

And also with you.

CALL TO WORSHIP

Melia and Paige McKenzie-Chandler

Leader: People of the covenant: God does not remember us according to our sins and transgressions.

People: **God remembers us according to God’s own steadfast love!**

Leader: The God of our salvation teaches us right paths and leads us in truth.

People: All the paths of the Lord are steadfast love and faithfulness; we put our trust in God.

Leader: People of the covenant, let us worship our steadfast, loving, faithful God!

* PROCESSIONAL HYMN #167

“Forty Days and Forty Nights”

AUS DER TIEFE RUFE ICH

CALL TO CONFESSION

Melia and Paige McKenzie-Chandler

PRAYER OF CONFESSION *(in unison)*

Melia and Paige McKenzie-Chandler

God of mercy, we begin this Lenten season in confession. We do not live according to your ways, but according to our own. We condone, turn away from, or ignore violence; we participate in or close our eyes to systems of injustice, and we use power to our own advantage at the expense of others. Forgive us, we pray, when tempted to follow paths other than those you set before us.

Teach us your commandments; help us turn from evil in its many forms and toward your kingdom drawing near. Remember us as we pray in covenantal love, and be for us, once more and always, an ark of safety and new life. Amen.

TIME OF SILENT CONFESSION

* Indicates where you may please rise in body or spirit.

February 18 • First Sunday in Lent

* Indicates where you may rise in body or spirit.

ASSURANCE OF GOD'S FORGIVENESS

Melia and Paige McKenzie-Chandler

Leader: Remember and receive these hopeful words from John 8:31-32, "If you **continue in my** word, you are truly my disciples, and you will know the truth, and the truth will make you **free.**" **Receive God's truth. Receive God's grace. Accept the freedom God provides. Friends, believe the good news of the gospel!**

People: En Jesucristo tenemos perdón.
¡Alaben a Dios!

In Jesus Christ, we are forgiven.
Praise God!

HANDBELL ANTHEM

"Shall We Gather at the River"

Karen Buckwalter

SCRIPTURE LESSON

Psalm 16

Melia and Paige McKenzie-Chandler

MOMENTS WITH OUR CHILDREN

Sara Hackett

Children of any age are welcome to come forward for Moments with our Children.

Children in preschool through grade 3 are invited to the nursery suite for a time of learning together (registration form required). Children younger than age 3 are welcome to attend, if accompanied by their parents. Children will return to the worship service during the Doxology. The nursery is open for play to young children who are accompanied by their parents/caregivers during worship; the service is livestreamed into that space.

* HYMN (please see music insert)

"Pass Me Not, O Gentle Savior"

PASS ME NOT

PRAYER OF ILLUMINATION

The Rev. Ralph Lowe

GOSPEL SCRIPTURE LESSON

Matthew 9:9-13

The Rev. Lowe

SERMON

"The Welcome Table"

The Rev. Lowe

TIME OF SILENT REFLECTION

PRAYERS OF INTERCESSION & THE LORD'S PRAYER

The Rev. Woodworth

The Lord's Prayer can be found on pg. 35 (English), on pg. 40 (Español) or on pg. 45 (한국어) in the Glory to God hymnal.

OFFERING INVITATION

The Rev. Woodworth

We offer our gifts in response to God's love, and the grace of Jesus Christ, which we seek to make known through the ministries of this congregation.

You are invited to use the QR code to the right if you would like to make a donation in support of ELPC. A donation box is also available in the Sanctuary.



OFFERTORY ANTHEM

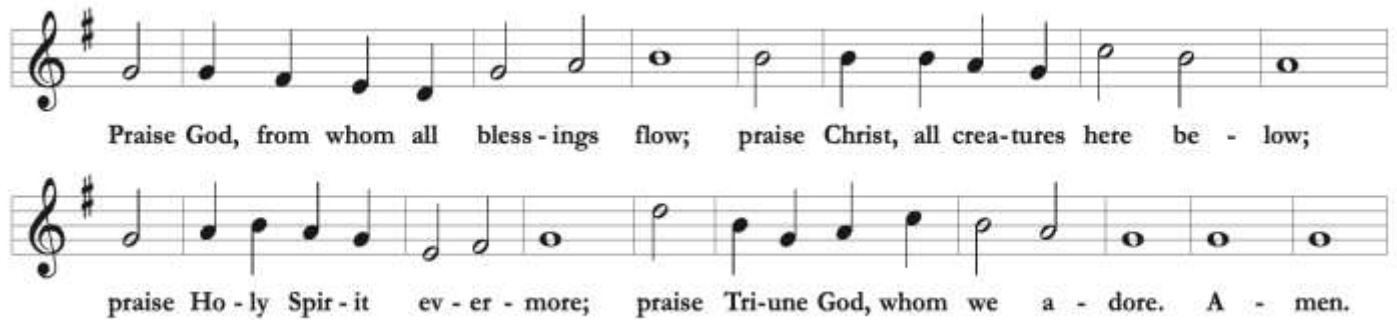
"Agnus Dei" (from Gospel Mass)

Robert Ray

* Indicates where you may rise in body or spirit.

* DOXOLOGY AT THE PRESENTATION #607

OLD HUNDREDTH



* PRAYER OF THANKSGIVING & DEDICATION

The Rev. Lowe
The Rev. Woodworth

Leader:	El Señor esté con ustedes.	The Lord be with you.
People:	Y también contigo.	And also with you.
Leader:	Levantemos nuestros corazones.	Lift up your hearts.
People:	Lo tenemos levantado al Señor.	We lift them up to the Lord.
Leader:	Demos gracias al Señor nuestro Dios.	Let us give thanks to the Lord our God.
People:	Es justo dar gracias y alabanzas a Dios.	It is right to give God thanks and praise.
Leader:	God of steadfast love and faithfulness, we are humbled as we try to do what is right and to walk in your ways. We ask that you receive these offerings and use them for your own good purposes in the church, in the world, and in all creation.	
People:	Amén.	Amen.

* RECESSIONAL HYMN #775

"I Want Jesus to Walk with Me"

WALK WITH ME

* CHARGE & BENEDICTION

The Rev. Lowe

POSTLUDE

"Festal March"

Florence Price
Dr. Moore, *organ*



As part of ELPC's mission to extend radical hospitality to all, our full worship service is now being livestreamed on Facebook and archived at www.ELPC.church. This notice is to inform you that by being in attendance, you give permission for incidences where you appear within the video. Should you have any questions, please see one of our pastors. Please silence all electronic devices before the service begins.

◆ PARTICIPANTS IN TODAY'S SERVICE

Preaching: The Rev. Ralph Lowe
Liturgists: The Rev. BJ Woodworth
Sara Hackett
Melia and Paige McKenzie-Chandler
Musicians: Dr. Edward Alan Moore
Organist/Music Director
ELPC Chancel Choir
ELPC Ringers
Soloists: Adrianna Cleveland, Tessa Morris
Judd Poeske, Denise Sheffey-Powell
Robin Thompson, Logan Williams
Beadle: Polly McQueen
Crucifer: Erich Stein
Sound: Wayne Gaines and Robert Jarsulic

◆ SUNDAY FELLOWSHIP

Please join us in the Fellowship Room for a *Social Hour* hosted by the Environmental Team of the Justice Committee after worship. You will be able to express your feelings about climate change, ideas about potential actions, and priorities for ELPC. Your contribution is important to help the Environmental Team and ELPC focus its efforts. Enjoy good food, warm drinks, and meet the Team.

◆ WORSHIP FLOWERS

If you would like to sponsor flowers for our weekly worship service in honor or memory of a loved one, contact Frances Wilson (wilson.franr@gmail.com). The cost is \$200.

◆ SUNDAY WORSHIP

8:45 am.....Journey Worship. An interactive, energetic service for those seeking a fresh encounter with the gospel of Jesus Christ.
Feb 25 — The Rev. BJ Woodworth preaching.
11 am.....Sanctuary Worship. Our largest service with a multi-cultural congregation and music from organ, piano and choir.
Feb 25 — The Rev. BJ Woodworth preaching.

◆ WEEKDAY WORSHIP

Taizé: Prayerful Song and Quiet Meditation
Chants and periods of meditative silence modeled after the Taizé community in France. Rev. BJ Woodworth leads this service in the Chapel.

Wednesdays, 7 pm

Prayer Room (*in Highland Ave hallway*)

Come to sit and pray in silence. Come to experience the quiet in the midst of the wonderful busyness.

Available everyday

◆ WEEKLY SPIRITUAL LIFE OFFERINGS

Contemplative Prayer

During Lent, Pastor BJ will be practicing *Centering Prayer*, “a method of silent prayer (20 minutes) that prepares us to receive the gift of contemplative prayer, prayer in which we experience God’s presence within us, closer than breathing, closer than thinking, closer than consciousness itself.” (*from Contemplative Outreach*)

Mondays, 7:30 to 8 am

Meeting ID: 959 8065 3992

Passcode: bestill

Meditation Hour

Join John Benedict, retired psychologist and practitioner of insight meditation, in the Chapel for an hour devoted to meditation, which includes an opening reading, silent sitting, and walking. All are welcome!

Tuesdays, 6-7 pm

WELCOME VISITORS!

We are grateful to have you join us for worship this morning and ask you to register your name in our red Friendship Books.

To learn more about our programs, church activities and volunteer services, we invite you to also:

Pick up a copy of our newsletter, the *Reaching Out*, either in the Narthex or at the Hospitality Desk near the Highland Avenue doors.

Attend an *Inquirers' Class* to learn more about ELPC, Presbyterian theology, and to explore membership. Please contact Megan Leisher for info (MeganL@coh.net).

Call the Church Office (412.441.3800), or visit the ELPC website at www.ELPC.church.

TODAY AT ELPC

Sunday Social Hour

Join us after the 11 am worship service today in the Fellowship Room for a *Social Hour* hosted by the Environmental Team of the Justice Committee. You will be able to express your feelings about climate change, ideas about potential actions, and priorities for ELPC. Your contribution is important to help the Environmental Team and ELPC focus its efforts. Enjoy good food, warm drinks, meet the Team and have lively conversations.



LGBTQIA+ Ministry Gathering

You are invited to the monthly spiritual gathering of ELPC's LGBTQIA+ Ministry at 12:30 pm today to share conversation and lunch. Contact Wil Forrest, LGBTQIA+ Ministry Coordinator, to attend or for more info (Wil@coh.net; 412.441.3800).

Registration Open for the PW Gathering "Necessary Risks"

If you dare to take the risks to pursue a more loving community, Presbyterian Women invites you to *Necessary Risks* on Saturday, March 9 at ELPC. Register today (or purchase the book) after today's 11 am worship in the Highland Ave hallway. More details can be found in the article on the back page of this announcement sheet.

Lenten Wilderness Display

To reflect our spiritual journey of the Lenten season, we bring images of a barren *Wilderness* into the worship space. You are invited to come up to the Chancel at the end of worship, access a copy of the detailed explanation, and explore the wilderness scene. We thank Mario Seneca and the Worship, Music & Arts Committee for this beautiful visual addition to our worship service!

Annual Report Available

Copies of the 2023 *Annual Report* are available on the information tables around the church. Please take one copy per family. The report can also be viewed on our website.

Today's Deacons-On-Duty (DOD)

Every Sunday, a DOD (*Deacon-on-Duty*) is available to assist with any emergencies that may occur during our services. The *Journey* service DOD is Tom Sturgill. The *Sanctuary* service DOD is Nate Stephens.



Food Drive

Please bring canned goods to worship throughout the season of Lent for the EECM Food Pantry so that we might share God's love by feeding our siblings in need.

Soup & Sustenance — Thursdays through March 28

Join us from 5:30-6:45 pm any Thursday (through March 28) in the McKelvy Room for soup, bread and fellowship. Soup and bread are provided; if you want to volunteer to bring a soup one week, contact Pastor BJ (BJW@coh.net).

Contemplative Prayer — Mondays

During Lent, Pastor BJ will be practicing *Centering Prayer*, "a method of silent prayer (20 minutes) that prepares us to receive the gift of contemplative prayer, prayer in which we experience God's presence within us, closer than breathing, closer than thinking, closer than consciousness itself." (from *Contemplative Outreach*). Please join on Zoom (Meeting ID: 959 8065 3992; Passcode: bestill).

Tween Retreat — Feb 24 and 25

Youth in grades 4–6 are heading to Crestfield Camp with youth from churches all around Pittsburgh for a *Tween Retreat* from Saturday, Feb 24 to Sunday, Feb 25. Our one-night retreat together will be filled with crafts, worship, games, campfires, music, silliness, and thoughtful questions. We will meet at ELPC on Saturday at 8 am, and return on Sunday at 12 pm. The cost is \$85 (scholarships are available).

Any parents who are interested in joining the fun by chaperoning should please contact Sara (SaraH@coh.net).

Cathedral Concert: Singing Our History — Feb 25

ELPC's *Cathedral Concerts* series will continue on Sunday, Feb 25 at 3 pm with *Singing Our History*—a special performance commemorating Black History Month with Robert Ray's timeless *Gospel Mass* and Women's History Month with choral and solo works by women composers and arrangers. The concert is free and open to the public. Download the brochure for the 13th season of *Cathedral Concerts* at <http://tiny.cc/elpcconcerts>.



Congregational Meeting — Feb 25

Session has called ELPC's annual *Congregational Meeting* for Sunday, Feb 25, immediately following Sanctuary worship. We will gather in the Social Hall for a light lunch, followed by our Annual Meeting. Childcare and activities for school-age children will be available during the meeting.

Teens Serving Breakfast at EECM — Feb 25

Our Teen Church School class (youth in grades 7–12) will be serving breakfast at East End Cooperative Ministry on Sunday, Feb 25. Contact Sara Hackett (SaraH@coh.net).



As a caring congregation of faith, we ask you to remember the following people in your prayers:

Mary Barr's friend Janice, Margo Buben,

Rev. Dr. Robert A. Chesnut,

Martha DeMarzi's friend Diane,

Pam Kimmel, Linda Lane's sister Gail, Lisa Petrilli,

Pastor Heather's cousin Kristie, and Rebecca Serey.

Condolences to Andrea DeVries on her father's passing.

Condolences to Doris Dick on her uncle's passing.

Condolences to Ian Faight on his grandmother's passing.

Condolences to Roberta London on her father's passing.

Condolences to the family of

Sonya-Marie Morley on her passing.

Committee Meeting This Week

Session Tuesday, Feb 20 @ 7:00 pm

For more info about how to join a meeting, please contact

Megan Leisher (MeganL@coh.net; 412.441.3800 x222).

"Necessary Risks" Event – March 9

Anyone who seeks a more just and equitable world is invited to a day of worship, learning, discussion, and good food on Saturday, March 9 from 9 am–3 pm, sponsored by Presbyterian Women. The Rev. Dr. Teri McDowell Ott will be our guide. She is the author of *Necessary Risks*, which grew out of her experiences as a college chaplain and volunteer at a men's prison. Her work is informed by authors, theologians, and scholars of color. She is the editor and publisher of *Presbyterian Outlook*. Registration must be received by noon, Wednesday, March 6, so we can reserve lunch for you or send you a Zoom link. You do not have to be Presbyterian or a woman to participate. For more info, email PW.ELPC@gmail.com.

Mark Your Calendars for VCS – June 24 to 28

Our annual *Vacation Church School* will be held the week of June 24–28. Whether you have a child in pre-K (age 4 and potty-trained) through grade 5 (completed) who would like to come as a camper, or you're a youth or adult who would like to volunteer, mark your calendar now!

LABYRINTH available in LENT

You are invited to come and walk the labyrinth on the stage in the Social Hall, through March 26.



- ♦ Tuesdays, 10 am–2 pm
- ♦ Thursdays, 10 am–7 pm
- ♦ Sundays, 10 am–2 pm

In our

COMMUNITY



Volunteers Needed for Harmony Dog Rescue

Harmony Dog Rescue, a new nonprofit that serves individuals and families in crisis, is seeking volunteers and donations. The mission of Harmony Dog Rescue is to provide safe homes for dogs whose owners are experiencing homelessness, domestic violence or medical emergencies. Please email info@harmonydogrescue.org or visit their website for info (www.harmonydogrescue.org).

Job Opening at PTS

Pittsburgh Theological Seminary (PTS) is seeking a full-time *General Maintenance Worker*. This position has an hourly wage range between \$18.50-\$21/hour. Benefits include an 11% retirement plan contribution (no match required); medical, dental/vision insurance; life insurance; long-term disability; paid time off (vacation/sick/personal days, volunteer hours; and a Christmas holiday break); tuition remission (for spouses and dependents); and eligibility to participate in the Tuition Exchange program. Interested applicants should email a cover letter, resume, and three references to careers@pts.edu.

Meditation Hour – Tuesdays

The Spiritual Life Committee invites you to join John Benedict in the Chapel each Tuesday from 6-7 pm for an hour devoted to meditation. John is a retired psychologist and a long time student and practitioner of insight meditation. No experience necessary, and all are welcome!

SUNDAY SCHOOL CLASSES FOR ALL AGES

Feb 25 ♦ 9:45 to 10:45 am

♦ ADULTS ♦

Journey with Scripture (Fellowship Rm) – Exploring the scripture passages represented in our Sanctuary's stained glass windows, facilitated by The Rev. Henk Bossers

Parenting Circle (Rm 213) – "Weekly Gatherings," exploring how our faith builds and nourishes our family lives, and parent/child relationships, facilitated by Trish Buben and other class members

Seekers (Garth Overlook Rm) – "Dancing in the Dark" led by The Rev. Otis Moss, facilitated by Gwen Puza

Soul Food (Good Samaritan Rm) – A discussion of chapters 13 and 14 of the book *Between the Dark and the Daylight* by Joan Chittester, led by The Rev. Joe Hajdu and other class members